

PRO-SUD PRÉSENTE

**1 RÉGION &
11 COMMUNES
EN CHIFFRES**

Édition 2017



Indices Sud

POUR LES ÉTUDES PRÉPARATOIRES VOLET ANALYSE

Syndicat PRO-SUD



12, avenue du Rock'n'Roll

L-4361 Esch-sur-Alzette

Tél. : 26 17 97 1 | Fax : 26 17 97 777

prosud@prosud.lu | www.prosud.lu



LA RÉGION SUD

ESCH-SUR-ALZETTE



VOLET DÉMOGRAPHIE

- Population
- Évolution démographique
- Soldes naturel et migratoire
- Pyramides des âges
- Nationalité

Source : STATEC et SIGI





Population

ESCH-SUR-ALZETTE

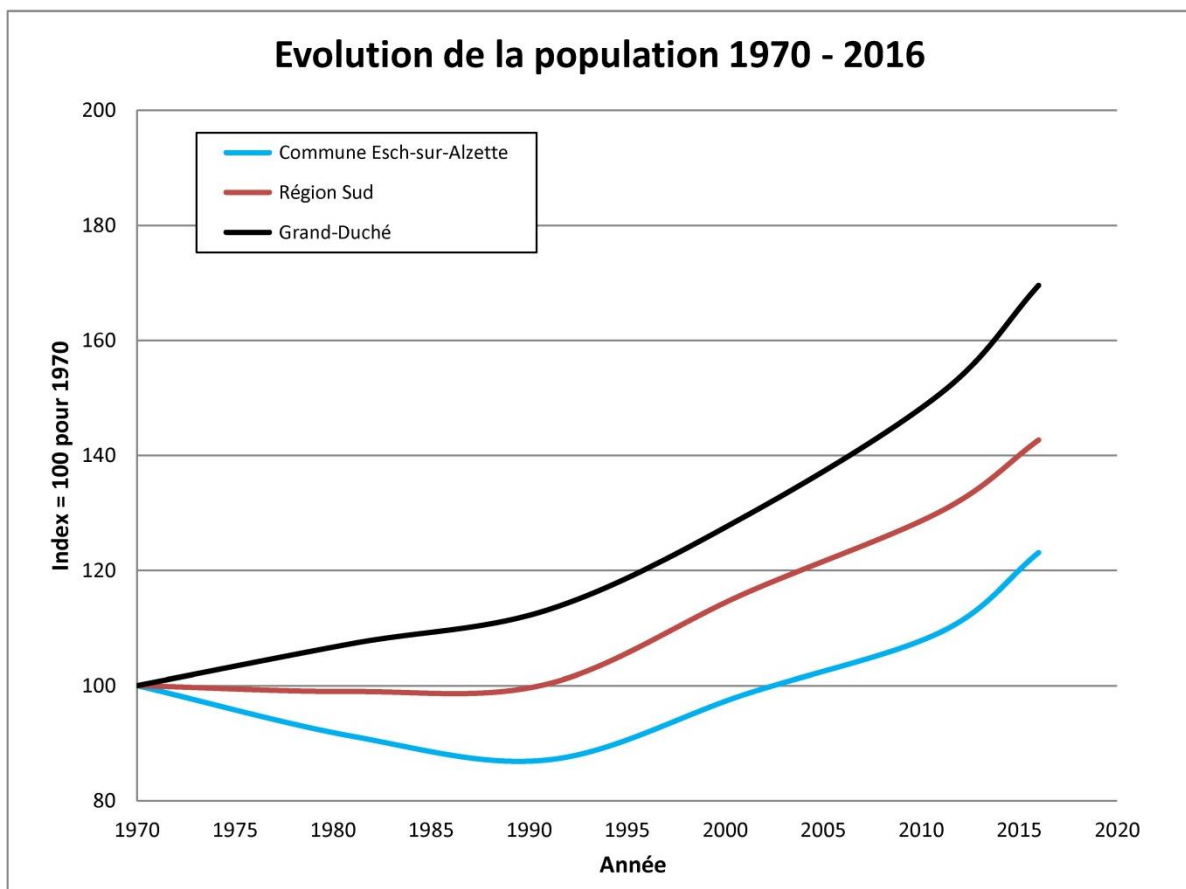
Evolution de la population 1970 - 2016 (Index = 100 pour 1970)

Chiffres absolus

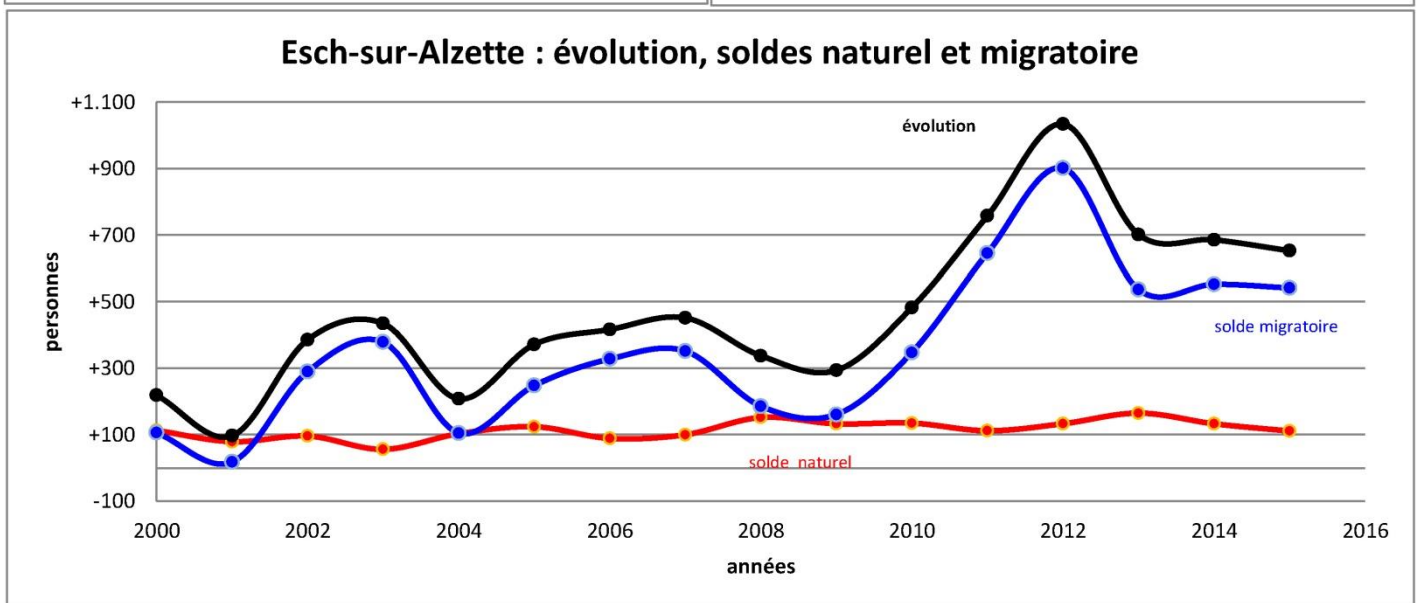
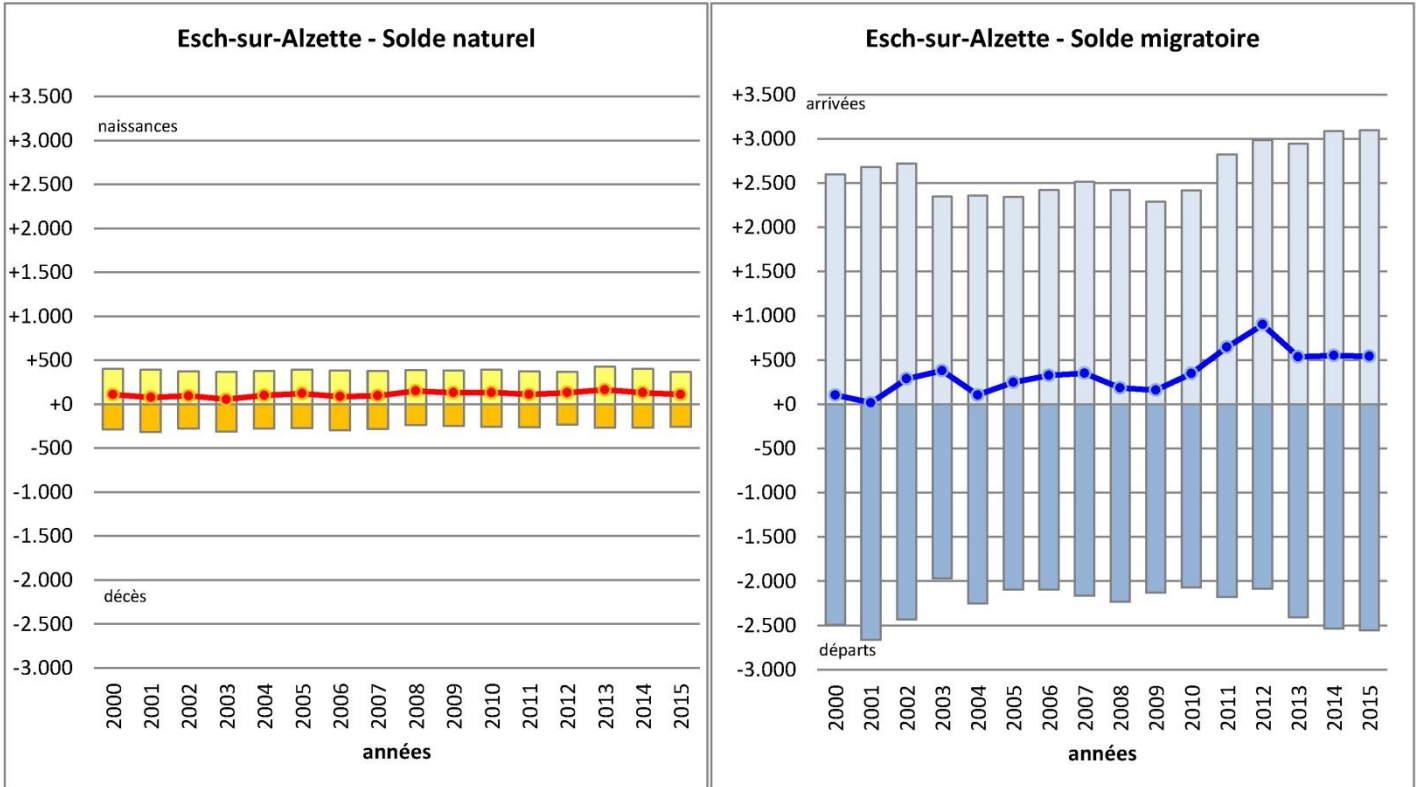
	1970	1981	1991	2001	2011	2016
Commune Esch-sur-Alzette	27.574	25.144	24.018	27.146	30.125	33.939
Région Sud	114.251	113.083	114.624	132.483	148.812	160.046
Grand-Duché	339.841	364.597	384.634	439.539	512.353	562.958

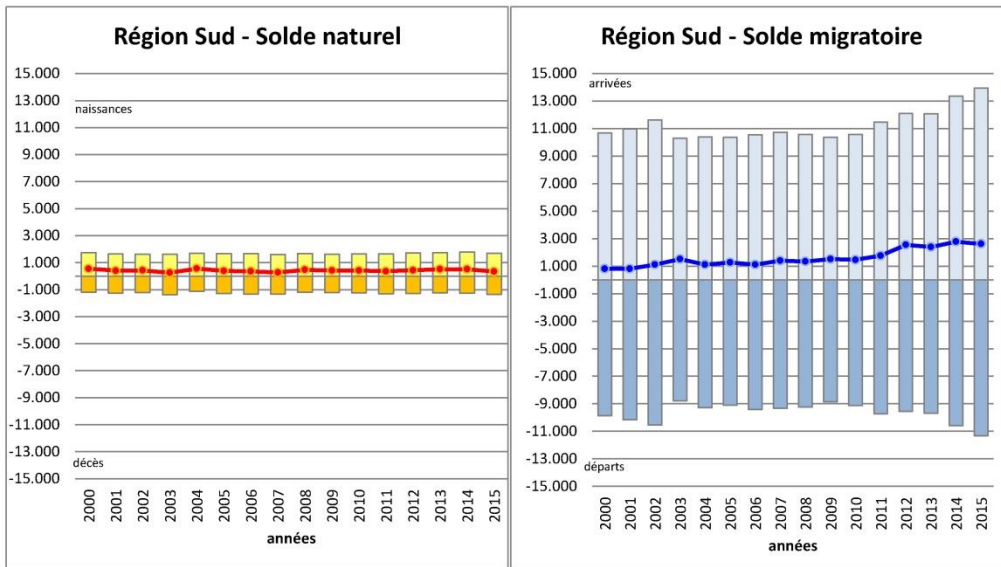
Index = 100 pour 1970

	1970	1981	1991	2001	2011	2016
Commune Esch-sur-Alzette	100	91,19	87,10	98,45	109,25	123,08
Région Sud	100	98,98	100,33	115,96	130,25	142,67
Grand-Duché	100	107,28	113,18	129,34	150,76	169,56

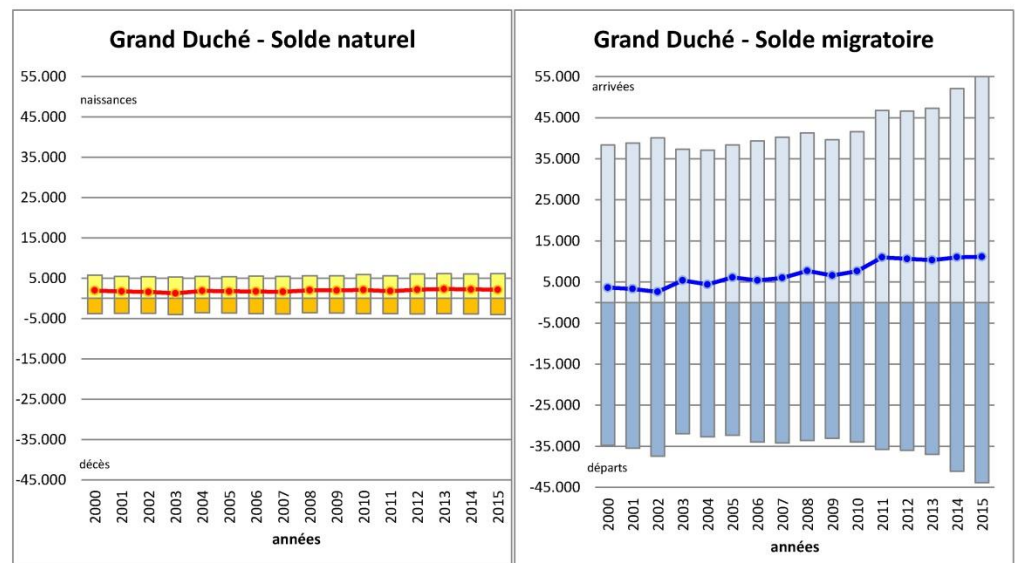
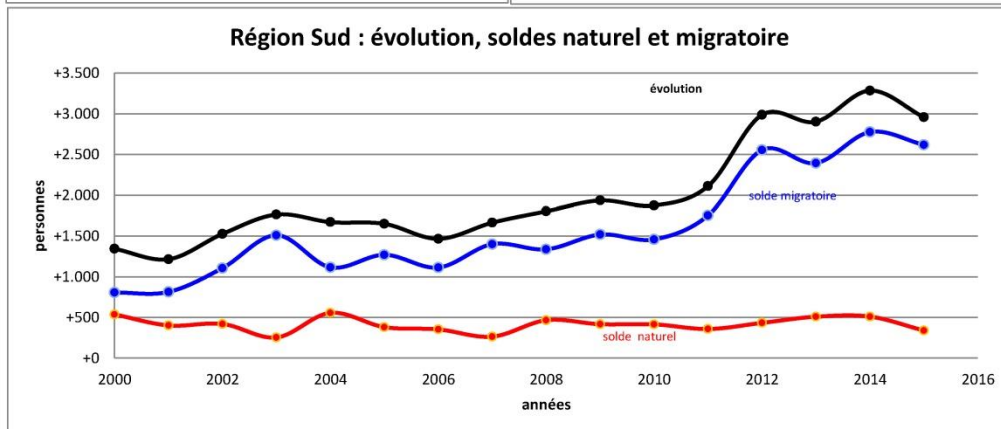


Soldes naturel et migratoire

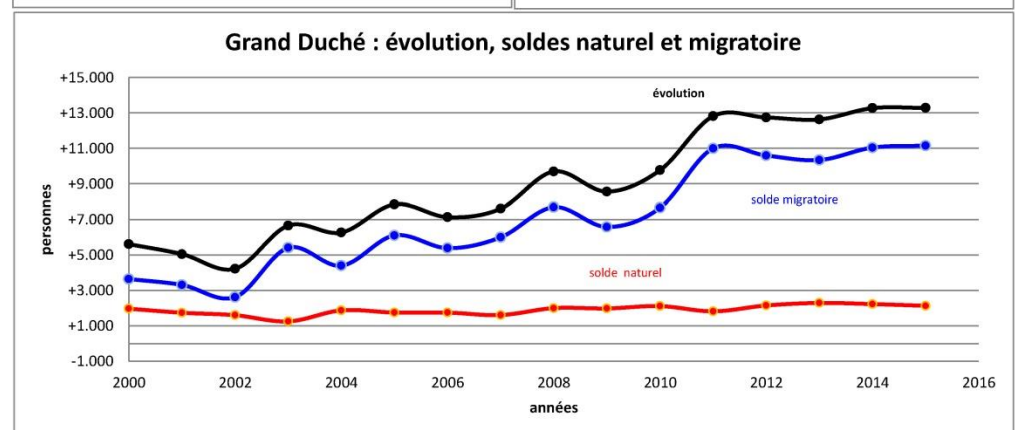




Région Sud



**Grand-Duché
de Luxembourg**



	Commune Esch-sur-Alzette			Région Sud			Grand-Duché		
	naissances	décès	solde naturel	naissances	décès	solde naturel	naissances	décès	solde naturel
2000	+401	-288	+113	1.737	-1200	+537	5.723	-3.754	+1.969
2001	+395	-316	+79	1.655	-1.253	+402	5.459	-3.719	+1.740
2002	+374	-278	+96	1.634	-1.214	+420	5.345	-3.744	+1.601
2003	+368	-312	+56	1.636	-1.382	+254	5.303	-4.053	+1.250
2004	+381	-278	+103	1.685	-1.129	+556	5.452	-3.578	+1.874
2005	+395	-271	+124	1.660	-1.279	+381	5.371	-3.621	+1.750
2006	+383	-294	+89	1.679	-1.326	+353	5.514	-3.766	+1.748
2007	+380	-280	+100	1.599	-1.335	+264	5.477	-3.866	+1.611
2008	+390	-238	+152	1.664	-1.198	+466	5.596	-3.595	+2.001
2009	+382	-249	+133	1.625	-1.208	+417	5.638	-3.655	+1.983
2010	+393	-258	+135	1.654	-1.239	+415	5.874	-3.760	+2.114
2011	+373	-261	+112	1.656	-1.298	+358	5.639	-3.819	+1.820
2012	+367	-234	+133	1.709	-1.276	+433	6.026	-3.876	+2.150
2013	+430	-265	+165	1.751	-1.242	+509	6.115	-3.822	+2.293
2014	+401	-268	+133	1.781	-1.271	+510	6.070	-3.841	+2.229
2015	+369	-258	+111	1.685	-1.346	+339	6.115	-3.983	+2.132

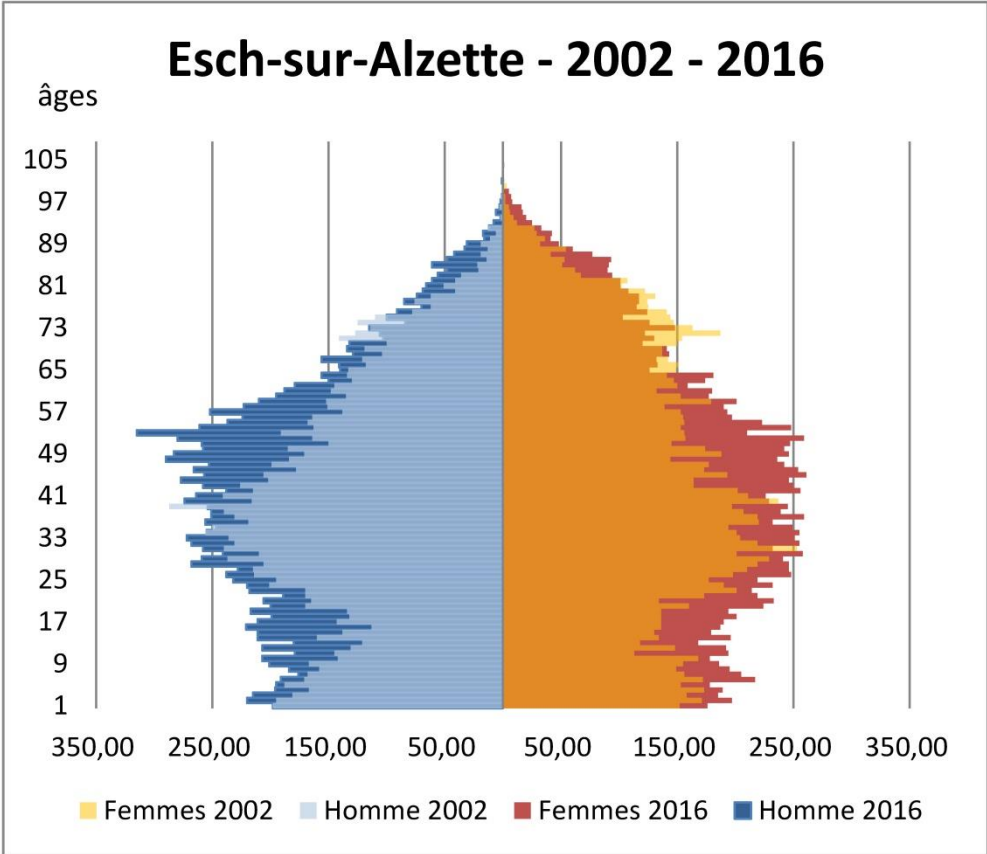
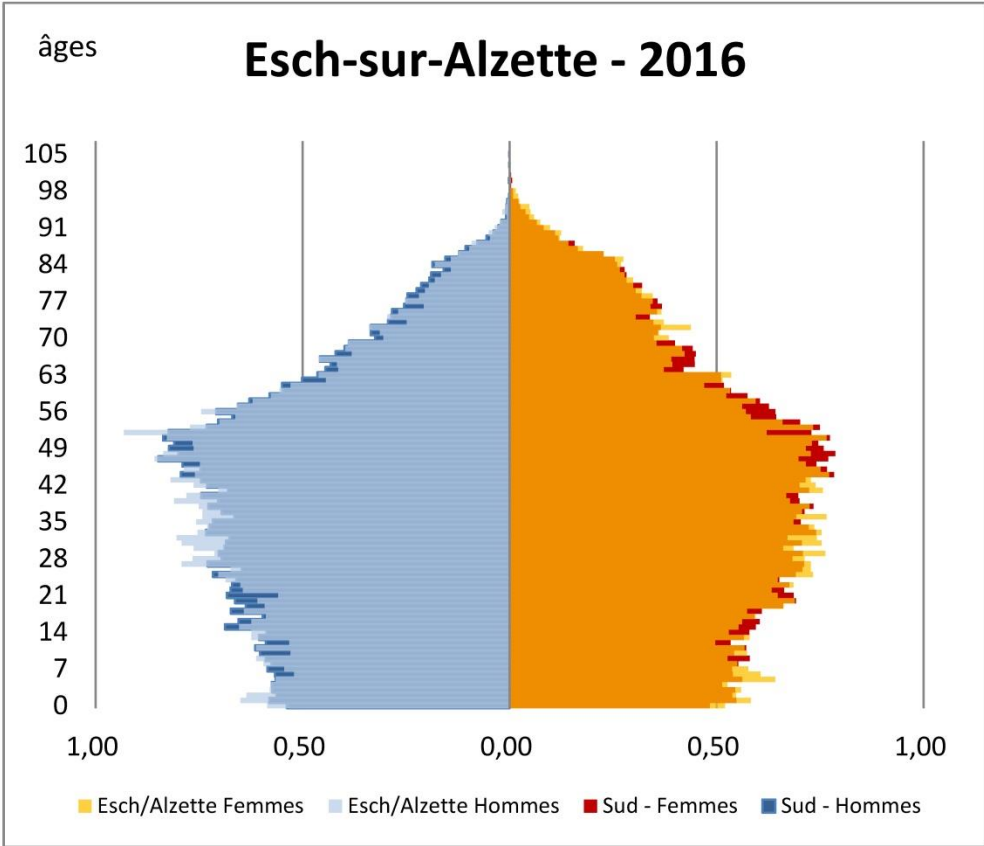
	arrivés	départs	solde migratoire	arrivés	départs	solde migratoire	arrivés	départs	solde migratoire
	2000	+2.596	-2.490	+106	10.679	-9.872	+807	38.404	-34.760
2001	+2.680	-2.662	+18	10.973	-10.159	+814	38.789	-35.478	+3.311
2002	+2.722	-2.432	+290	11.641	-10.534	+1.107	40.074	-37.452	+2.622
2003	+2.348	-1.969	+379	10.309	-8.798	+1.511	37.354	-31.945	+5.409
2004	+2.358	-2.253	+105	10.394	-9.278	+1.116	37.116	-32.720	+4.396
2005	+2.342	-2.094	+248	10.367	-9.097	+1.270	38.392	-32.286	+6.106
2006	+2.423	-2.095	+328	10.541	-9.427	+1.114	39.357	-33.968	+5.389
2007	+2.517	-2.165	+352	10.736	-9.335	+1.401	40.226	-34.225	+6.001
2008	+2.420	-2.234	+186	10.582	-9.244	+1.338	41.326	-33.626	+7.700
2009	+2.289	-2.128	+161	10.371	-8.852	+1.519	39.660	-33.077	+6.583
2010	+2.419	-2.071	+348	10.584	-9.124	+1.460	41.629	-33.969	+7.660
2011	+2.824	-2.178	+646	11.479	-9.725	+1.754	46.792	-35.787	+11.005
2012	+2.986	-2.084	+902	12.106	-9.551	+2.555	46.599	-35.997	+10.602
2013	+2.947	-2.410	+537	12.080	-9.686	+2.394	47.321	-36.973	+10.348
2014	+3.089	-2.536	+553	13.365	-10.589	+2.776	52.112	-41.063	+11.049
2015	+3.099	-2.557	+542	13.952	-11.333	+2.619	54.997	-43.838	+11.159

	solde naturel	solde migratoire	évolution	solde naturel	solde migratoire	évolution	solde naturel	solde migratoire	évolution
	2000	+113	+106	+219	+537	+807	+1.344	+1.969	+3.644
2001	+79	+18	+97	+402	+814	+1.216	+1.740	+3.311	+5.051
2002	+96	+290	+386	+420	+1.107	+1.527	+1.601	+2.622	+4.223
2003	+56	+379	+435	+254	+1.511	+1.765	+1.250	+5.409	+6.659
2004	+103	+105	+208	+556	+1.116	+1.672	+1.874	+4.396	+6.270
2005	+124	+248	+372	+381	+1.270	+1.651	+1.750	+6.106	+7.856
2006	+89	+328	+417	+353	+1.114	+1.467	+1.748	+5.389	+7.137
2007	+100	+352	+452	+264	+1.401	+1.665	+1.611	+6.001	+7.612
2008	+152	+186	+338	+466	+1.338	+1.804	+2.001	+7.700	+9.701
2009	+133	+161	+294	+417	+1.519	+1.936	+1.983	+6.583	+8.566
2010	+135	+348	+483	+415	+1.460	+1.875	+2.114	+7.660	+9.774
2011	+112	+646	+758	+358	+1.754	+2.112	+1.820	+11.005	+12.825
2012	+133	+902	+1.035	+433	+2.555	+2.988	+2.150	+10.602	+12.752
2013	+165	+537	+702	+509	+2.394	+2.903	+2.293	+10.348	+12.641
2014	+133	+553	+686	+510	+2.776	+3.286	+2.229	+11.049	+13.278
2015	+111	+542	+653	+339	+2.619	+2.958	+2.132	+11.159	+13.291

Pyramides des âges



**Superposition
avec la région**

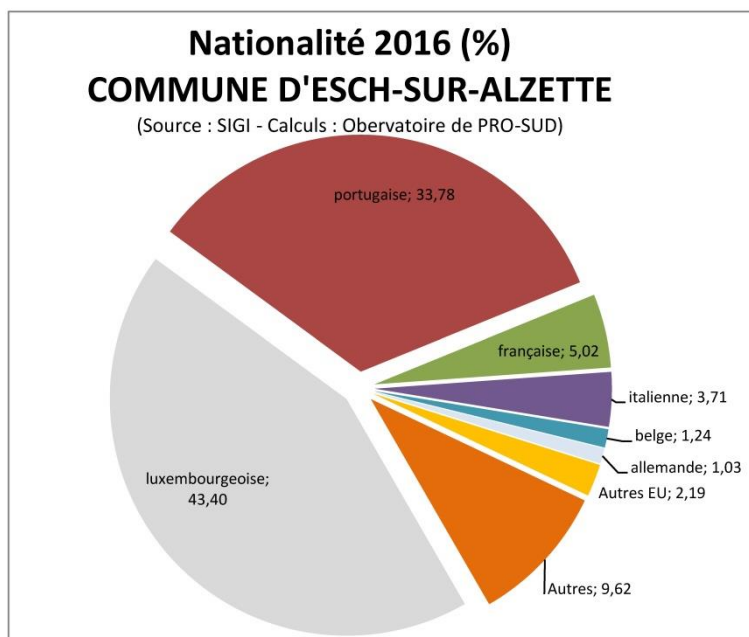


**Comparaison
sur 14 ans**

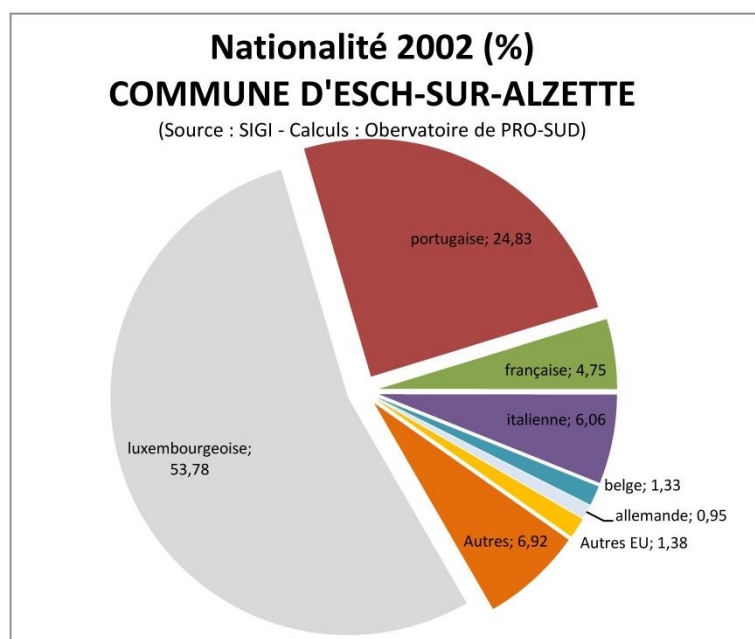
Commune : Nationalités 2016 et 2002



2016 - SIGI	Esch-/Alzette
luxembourgeoise	14681
portugaise	11427
française	1697
italienne	1254
belge	421
allemande	350
Autres EU	742
Autres	3255
Total	33827

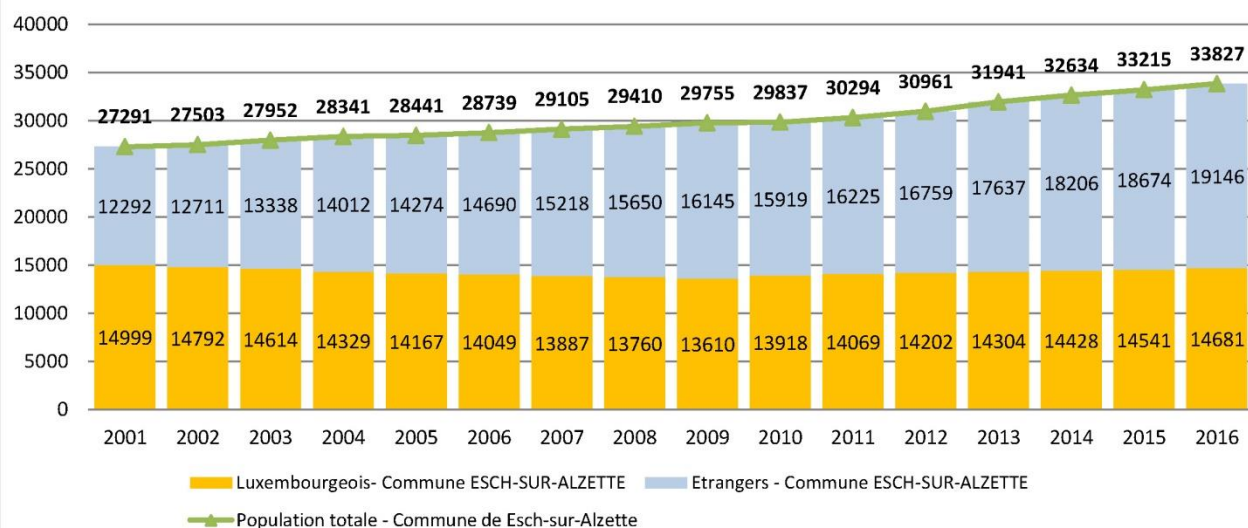


2002 - SIGI	Esch-/Alzette
luxembourgeoise	14792
portugaise	6829
française	1306
italienne	1668
belge	366
allemande	261
Autres EU	380
Autres	1903
Total	27505



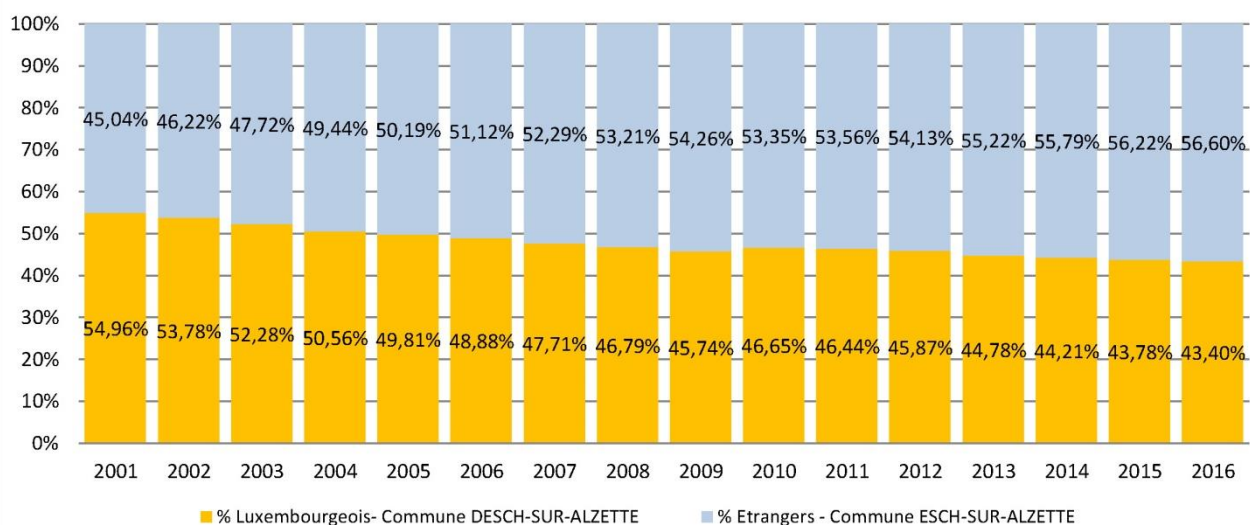
Evolution de la population communale par nationalité COMMUNE D'ESCH-SUR-ALZETTE

Source : SIGI - Claculs Observatoire de PRO-SUD



Evolution de la population communale par nationalité (%) COMMUNE D'ESCH-SUR-ALZETTE

Source : SIGI - Claculs Observatoire de PRO-SUD



Pyramides des âges & nationalité

