

PRO-SUD PRÉSENTE

**1 RÉGION &
11 COMMUNES
EN CHIFFRES**

Édition 2017



Indices Sud

POUR LES ÉTUDES PRÉPARATOIRES VOLET ANALYSE

Syndicat PRO-SUD



12, avenue du Rock'n'Roll

L-4361 Esch-sur-Alzette

Tél. : 26 17 97 1 | Fax : 26 17 97 777

prosud@prosud.lu | www.prosud.lu



LA RÉGION SUD

PÉTANGE

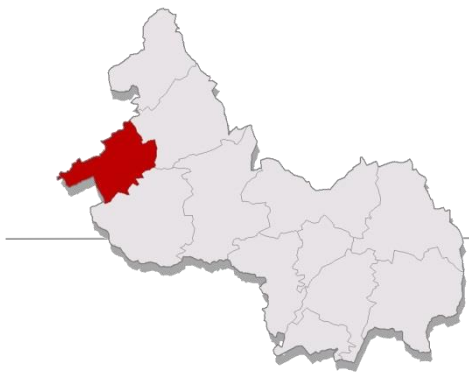


VOLET DÉMOGRAPHIE

- Population
- Évolution démographique
- Soldes naturel et migratoire
- Pyramides des âges
- Nationalité

Source : STATEC et SIGI





Population

PÉTANGE

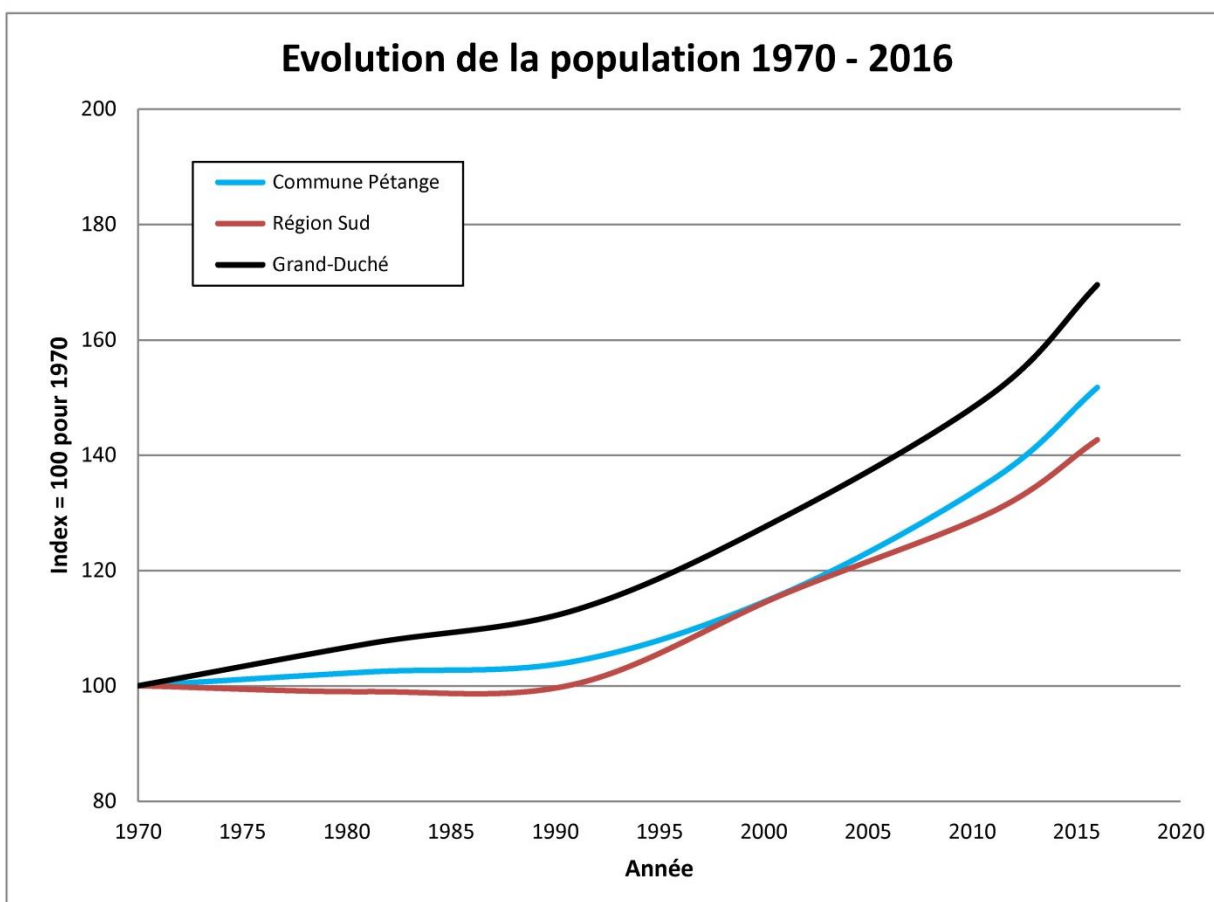
Evolution de la population 1970 - 2016 (Index = 100 pour 1970)

Chiffres absolus

	1970	1981	1991	2001	2011	2016
Commune Pétange	11.844	12.127	12.352	13.749	16.085	17.973
Région Sud	114.251	113.083	114.624	132.483	148.812	160.046
Grand-Duché	339.841	364.597	384.634	439.539	512.353	562.958

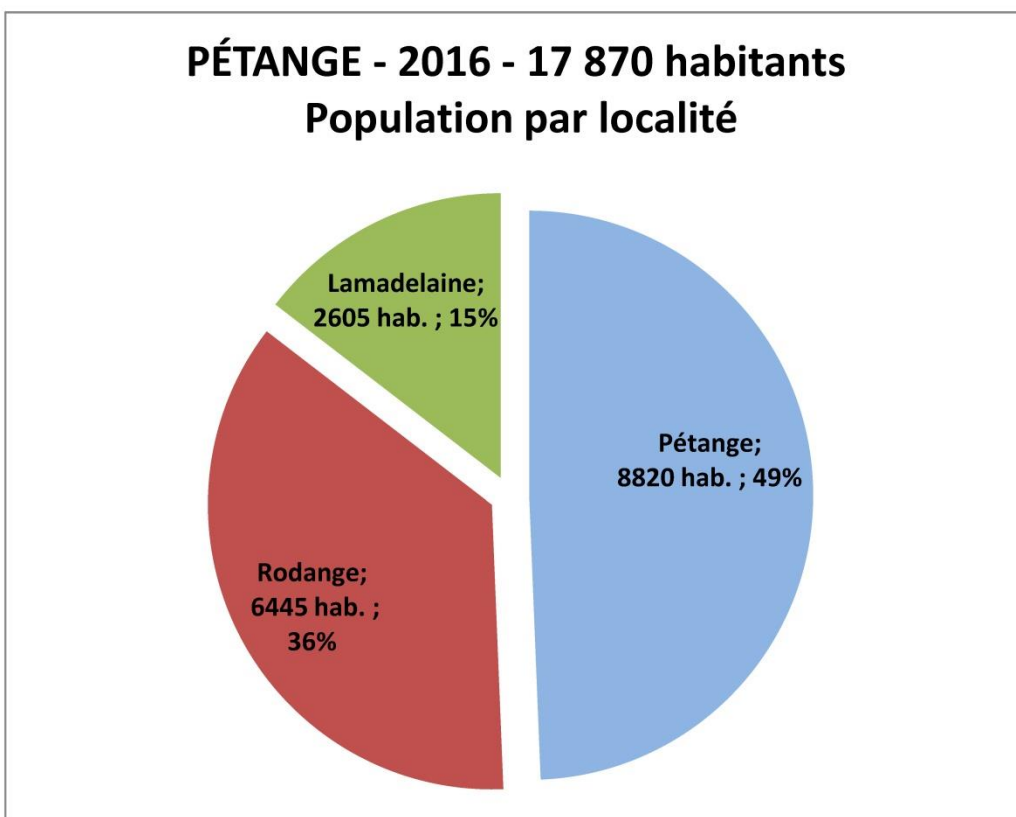
Index = 100 pour 1970

	1970	1981	1991	2001	2011	2016
Commune Pétange	100	102,39	104,29	116,08	135,81	151,75
Région Sud	100	98,98	100,33	115,96	130,25	142,67
Grand-Duché	100	107,28	113,18	129,34	150,76	169,56

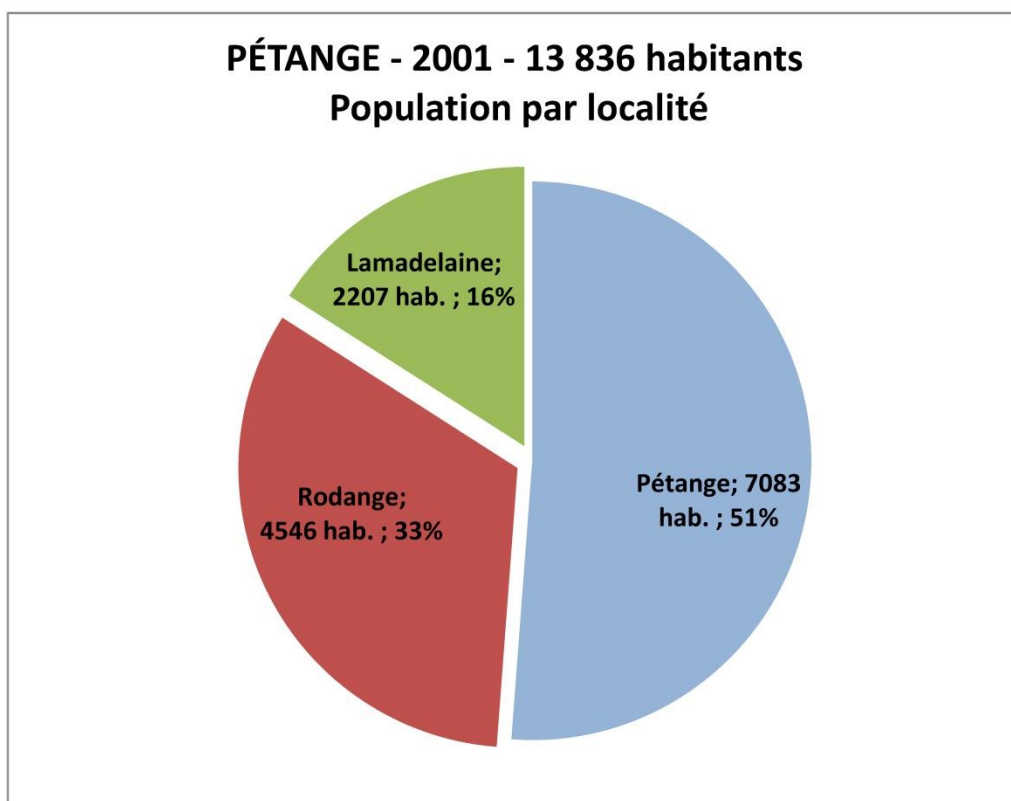




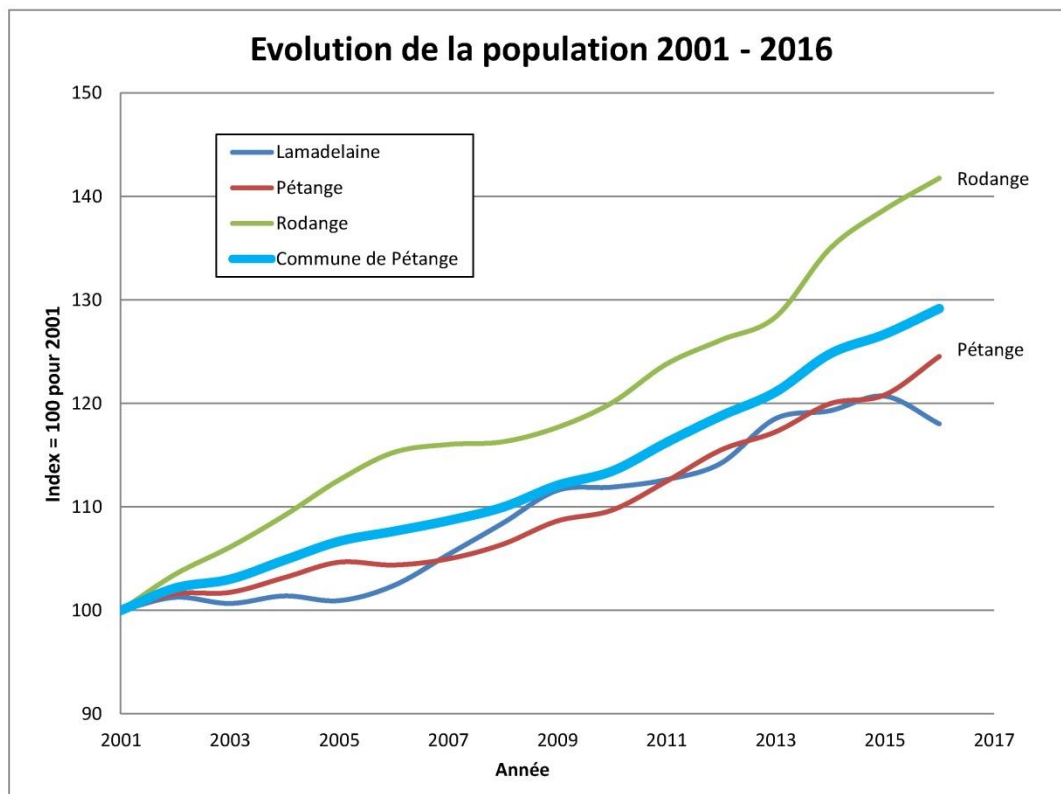
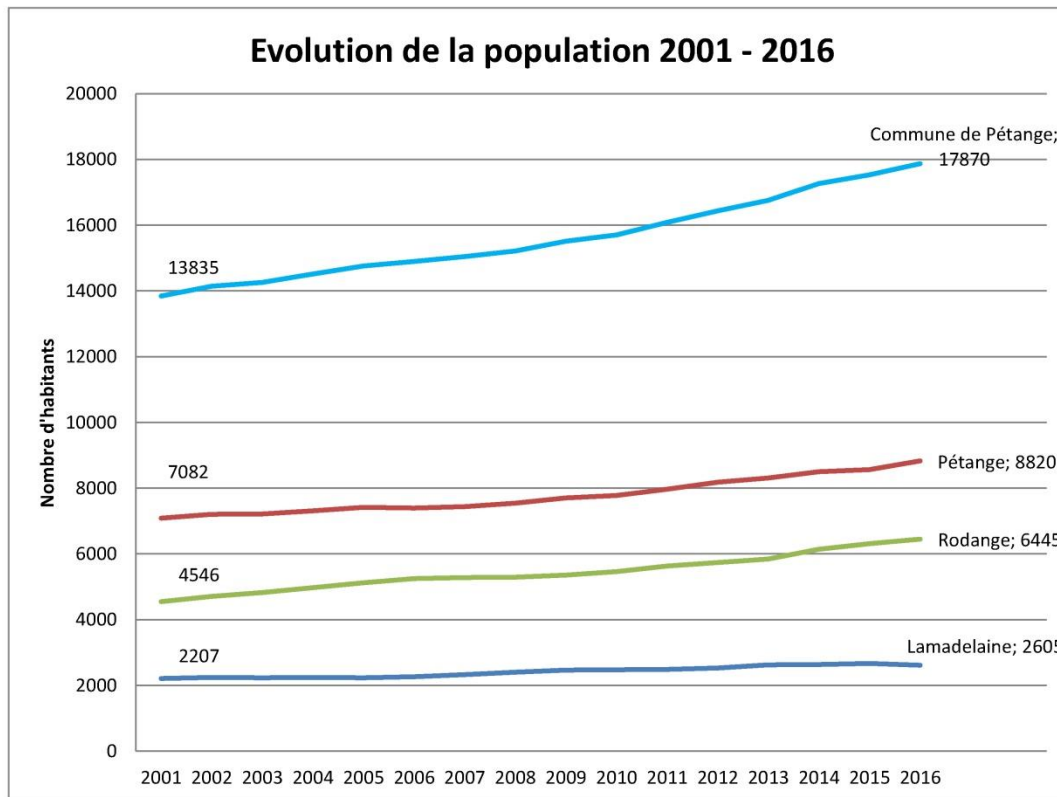
2016



2001



Évolution démographique par localité



PÉTANGE

Evolution de la population 2001 - 2016 (Index = 100 pour 2001)

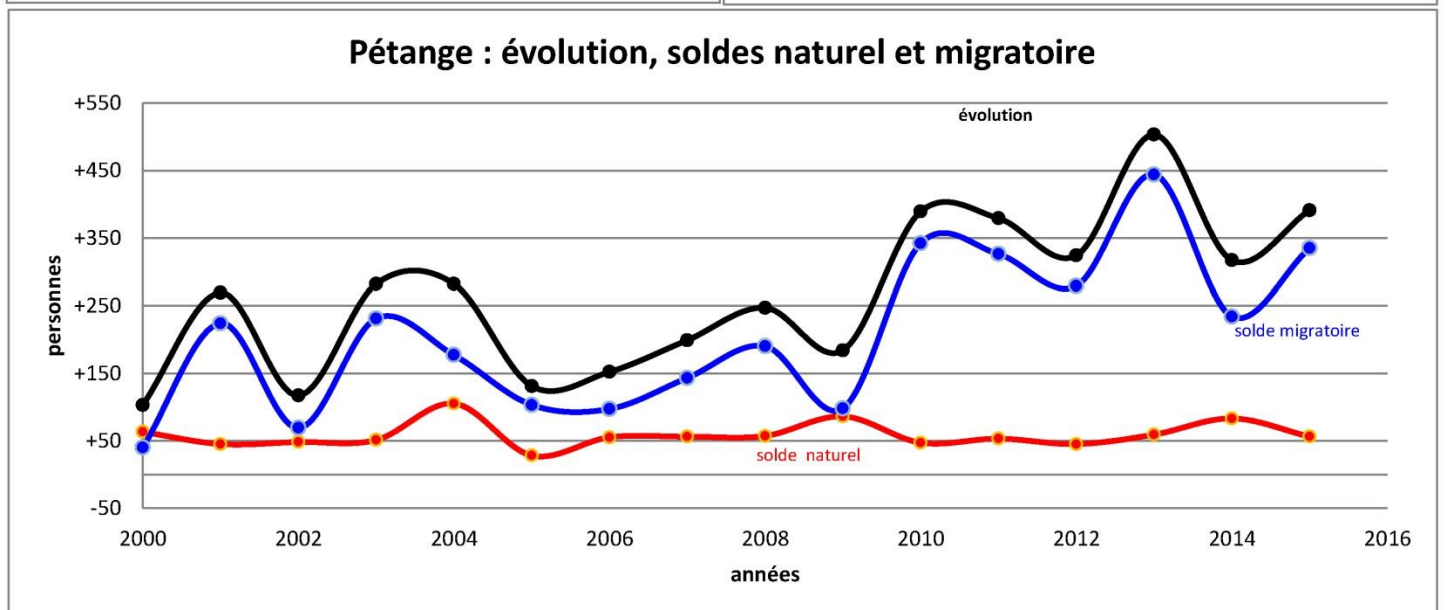
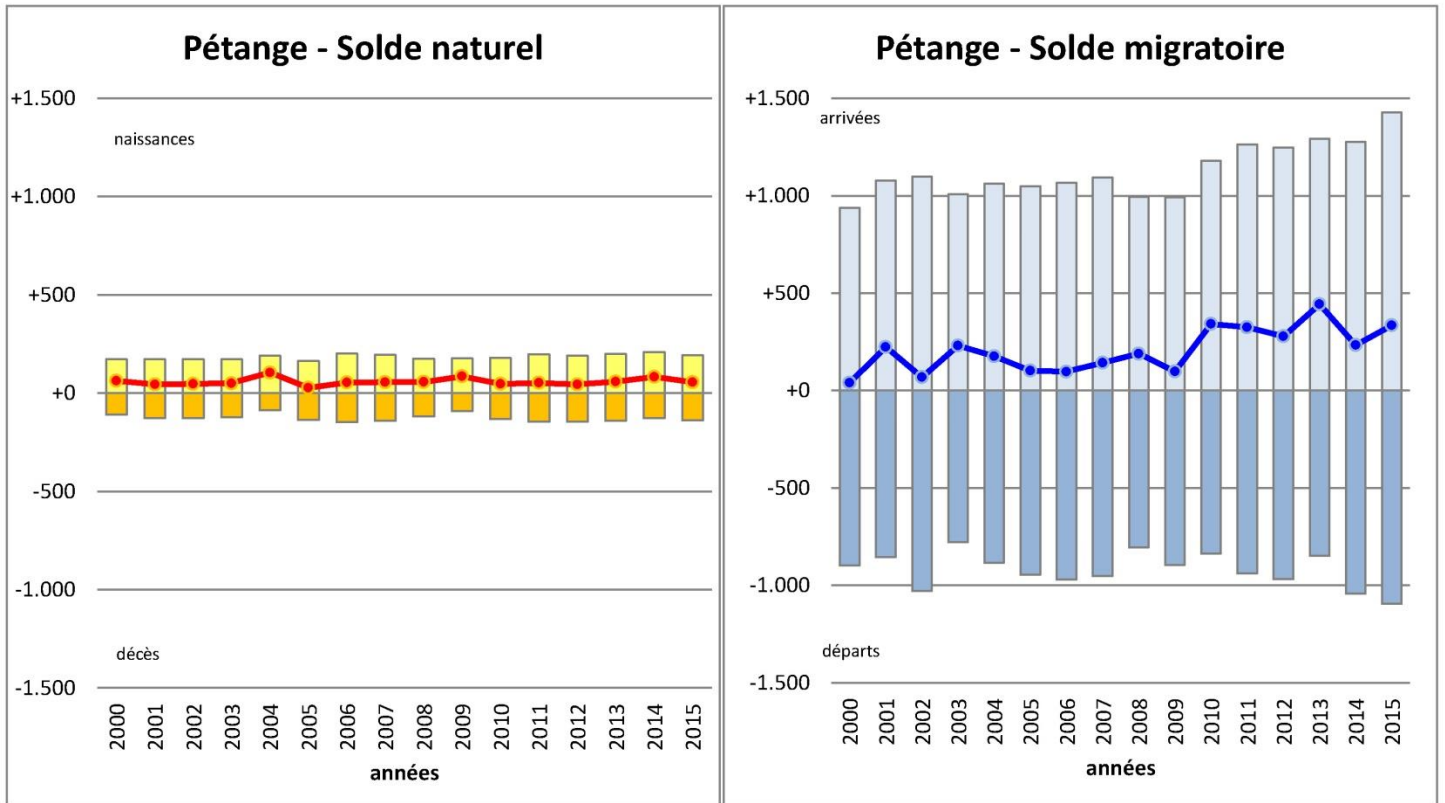
Chiffres absolus

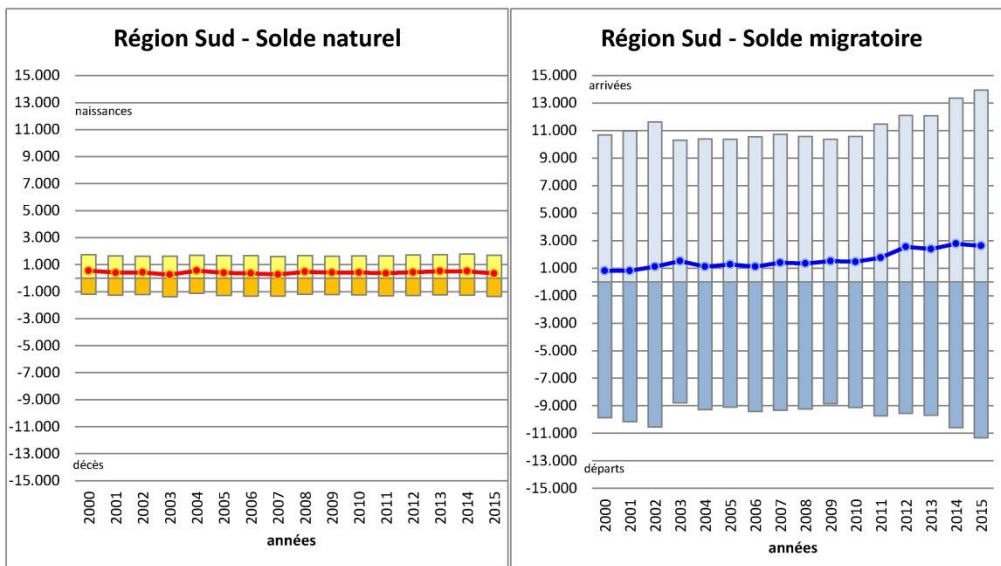
	2001	2002	2003	2004	2005	2006	2007	2008	2009	2010	2011	2012	2013	2014	2015	2016
Lamadelaine	2207	2235	2222	2238	2228	2260	2326	2393	2463	2470	2486	2521	2616	2633	2664	2605
Pétange	7082	7195	7206	7307	7412	7393	7435	7535	7694	7768	7965	8180	8304	8497	8557	8820
Rodange	4546	4705	4824	4963	5119	5240	5275	5287	5350	5458	5628	5734	5835	6136	6307	6445
Commune de Pétange	13835	14135	14252	14508	14759	14893	15036	15215	15507	15696	16079	16435	16755	17266	17528	17870

Index = 100 pour 2001

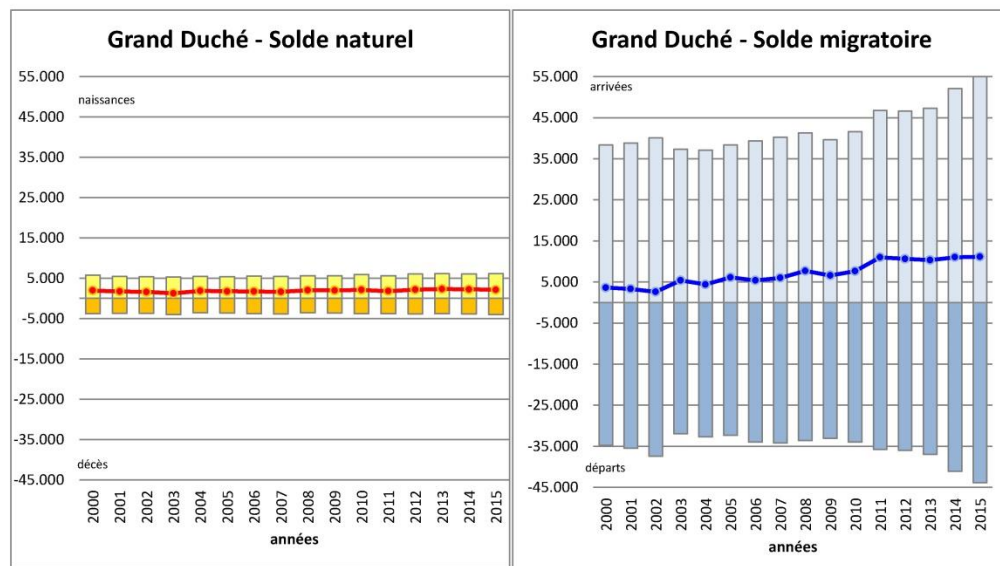
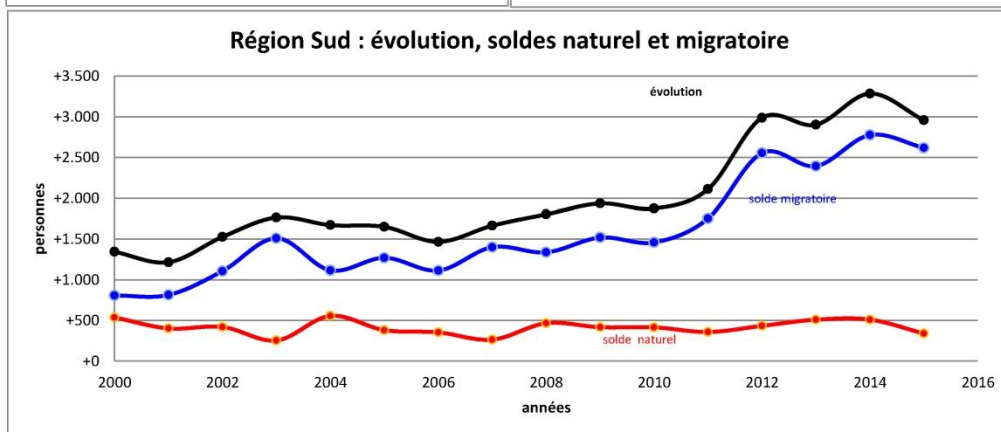
	2001	2002	2003	2004	2005	2006	2007	2008	2009	2010	2011	2012	2013	2014	2015	2016
Lamadelaine	100	101,27	100,68	101,40	100,95	102,40	105,39	108,43	111,60	111,92	112,64	114,23	118,53	119,30	120,71	118,03
Pétange	100	101,60	101,75	103,18	104,66	104,39	104,98	106,40	108,64	109,69	112,47	115,50	117,26	119,98	120,83	124,54
Rodange	100	103,50	106,12	109,17	112,60	115,27	116,04	116,30	117,69	120,06	123,80	126,13	128,35	134,98	138,74	141,77
Commune de Pétange	100	102,17	103,01	104,86	106,68	107,65	108,68	109,97	112,09	113,45	116,22	118,79	121,11	124,80	126,69	129,17

Soldes naturel et migratoire

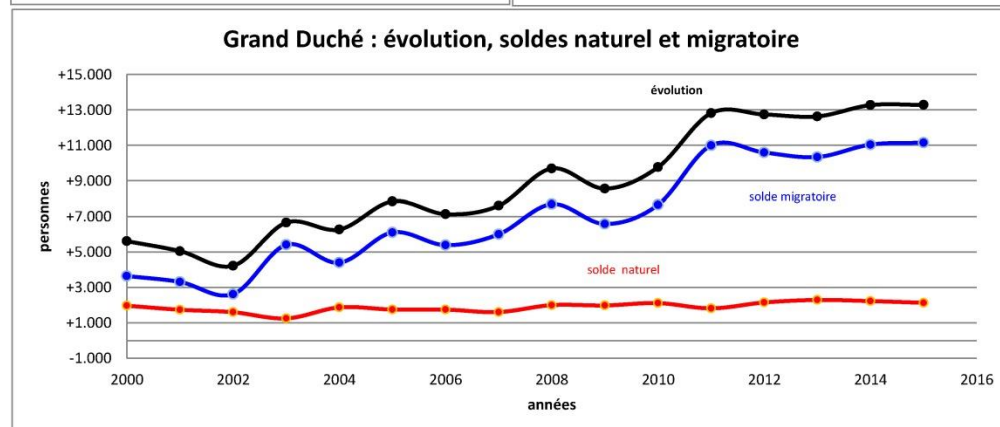




Région Sud



Grand-Duché de Luxembourg



Solde naturel

	Commune Pétange			Région Sud			Grand-Duché		
	naissances	décès	solde naturel	naissances	décès	solde naturel	naissances	décès	solde naturel
2000	+172	-109	+63	1.737	-1200	+537	5.723	-3.754	+1.969
2001	+172	-127	+45	1.655	-1.253	+402	5.459	-3.719	+1.740
2002	+174	-126	+48	1.634	-1.214	+420	5.345	-3.744	+1.601
2003	+174	-123	+51	1.636	-1.382	+254	5.303	-4.053	+1.250
2004	+191	-86	+105	1.685	-1.129	+556	5.452	-3.578	+1.874
2005	+165	-137	+28	1.660	-1.279	+381	5.371	-3.621	+1.750
2006	+203	-148	+55	1.679	-1.326	+353	5.514	-3.766	+1.748
2007	+196	-140	+56	1.599	-1.335	+264	5.477	-3.866	+1.611
2008	+176	-119	+57	1.664	-1.198	+466	5.596	-3.595	+2.001
2009	+177	-91	+86	1.625	-1.208	+417	5.638	-3.655	+1.983
2010	+179	-132	+47	1.654	-1.239	+415	5.874	-3.760	+2.114
2011	+197	-144	+53	1.656	-1.298	+358	5.639	-3.819	+1.820
2012	+190	-145	+45	1.709	-1.276	+433	6.026	-3.876	+2.150
2013	+200	-141	+59	1.751	-1.242	+509	6.115	-3.822	+2.293
2014	+209	-126	+83	1.781	-1.271	+510	6.070	-3.841	+2.229
2015	+194	-138	+56	1.685	-1.346	+339	6.115	-3.983	+2.132

Solde migratoire

	arrivés	départs	solde migratoire	arrivés	départs	solde migratoire	arrivés	départs	solde migratoire
2000	+938	-898	+40	10.679	-9.872	+807	38.404	-34.760	+3.644
2001	+1.078	-854	+224	10.973	-10.159	+814	38.789	-35.478	+3.311
2002	+1.098	-1.029	+69	11.641	-10.534	+1.107	40.074	-37.452	+2.622
2003	+1.008	-777	+231	10.309	-8.798	+1.511	37.354	-31.945	+5.409
2004	+1.061	-884	+177	10.394	-9.278	+1.116	37.116	-32.720	+4.396
2005	+1.048	-945	+103	10.367	-9.097	+1.270	38.392	-32.286	+6.106
2006	+1.067	-970	+97	10.541	-9.427	+1.114	39.357	-33.968	+5.389
2007	+1.094	-951	+143	10.736	-9.335	+1.401	40.226	-34.225	+6.001
2008	+994	-804	+190	10.582	-9.244	+1.338	41.326	-33.626	+7.700
2009	+993	-895	+98	10.371	-8.852	+1.519	39.660	-33.077	+6.583
2010	+1.179	-837	+342	10.584	-9.124	+1.460	41.629	-33.969	+7.660
2011	+1.264	-938	+326	11.479	-9.725	+1.754	46.792	-35.787	+11.005
2012	+1.247	-968	+279	12.106	-9.551	+2.555	46.599	-35.997	+10.602
2013	+1.293	-849	+444	12.080	-9.686	+2.394	47.321	-36.973	+10.348
2014	+1.277	-1.043	+234	13.365	-10.589	+2.776	52.112	-41.063	+11.049
2015	+1.429	-1.094	+335	13.952	-11.333	+2.619	54.997	-43.838	+11.159

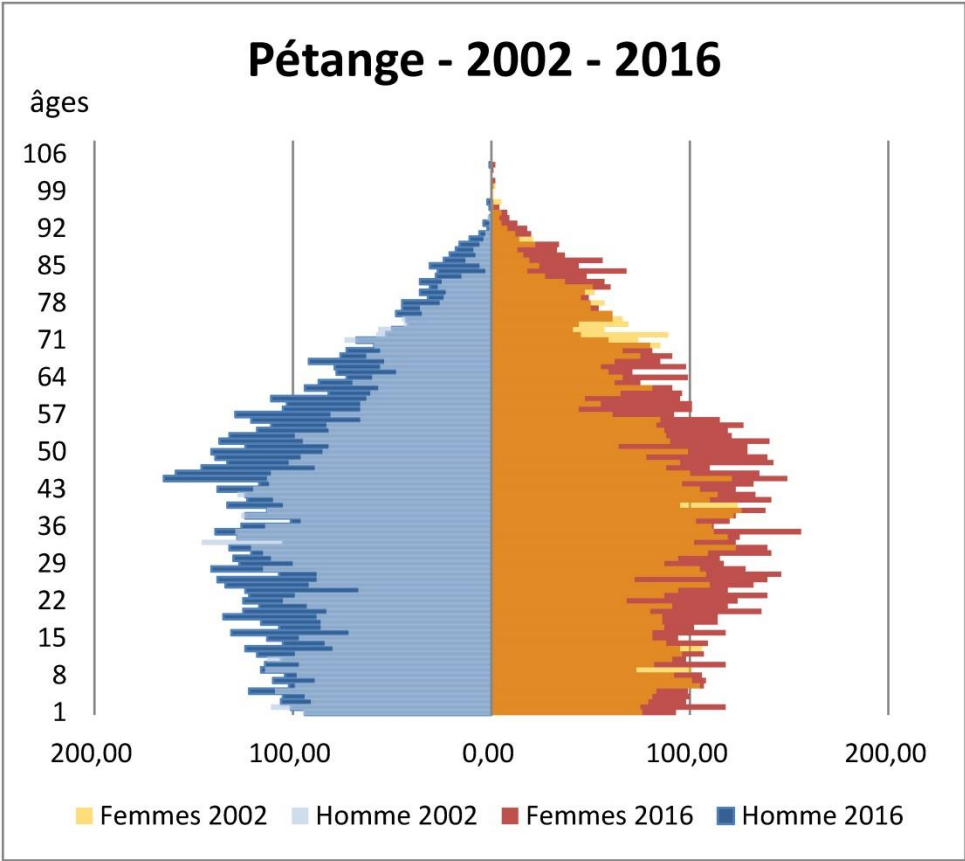
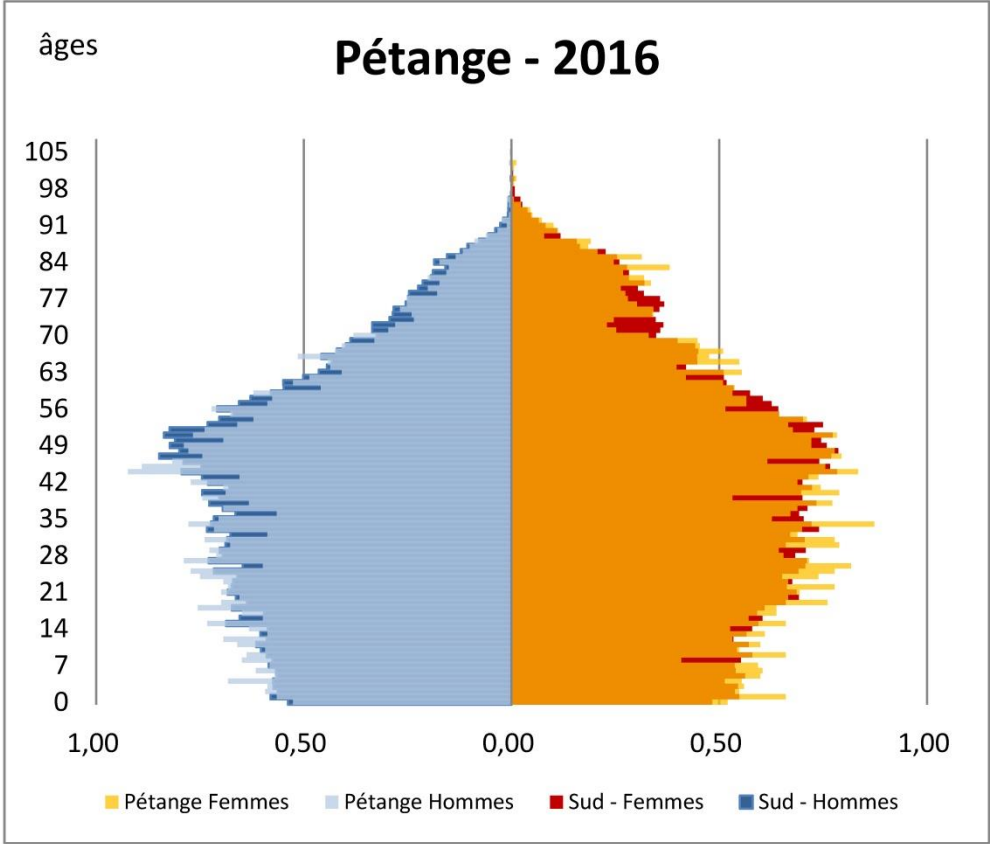
Evolution

	solde naturel	solde migratoire	évolution	solde naturel	solde migratoire	évolution	solde naturel	solde migratoire	évolution
2000	+63	+40	+103	+537	+807	+1.344	+1.969	+3.644	+5.613
2001	+45	+224	+269	+402	+814	+1.216	+1.740	+3.311	+5.051
2002	+48	+69	+117	+420	+1.107	+1.527	+1.601	+2.622	+4.223
2003	+51	+231	+282	+254	+1.511	+1.765	+1.250	+5.409	+6.659
2004	+105	+177	+282	+556	+1.116	+1.672	+1.874	+4.396	+6.270
2005	+28	+103	+131	+381	+1.270	+1.651	+1.750	+6.106	+7.856
2006	+55	+97	+152	+353	+1.114	+1.467	+1.748	+5.389	+7.137
2007	+56	+143	+199	+264	+1.401	+1.665	+1.611	+6.001	+7.612
2008	+57	+190	+247	+466	+1.338	+1.804	+2.001	+7.700	+9.701
2009	+86	+98	+184	+417	+1.519	+1.936	+1.983	+6.583	+8.566
2010	+47	+342	+389	+415	+1.460	+1.875	+2.114	+7.660	+9.774
2011	+53	+326	+379	+358	+1.754	+2.112	+1.820	+11.005	+12.825
2012	+45	+279	+324	+433	+2.555	+2.988	+2.150	+10.602	+12.752
2013	+59	+444	+503	+509	+2.394	+2.903	+2.293	+10.348	+12.641
2014	+83	+234	+317	+510	+2.776	+3.286	+2.229	+11.049	+13.278
2015	+56	+335	+391	+339	+2.619	+2.958	+2.132	+11.159	+13.291

Pyramides des âges



**Superposition
avec la région**

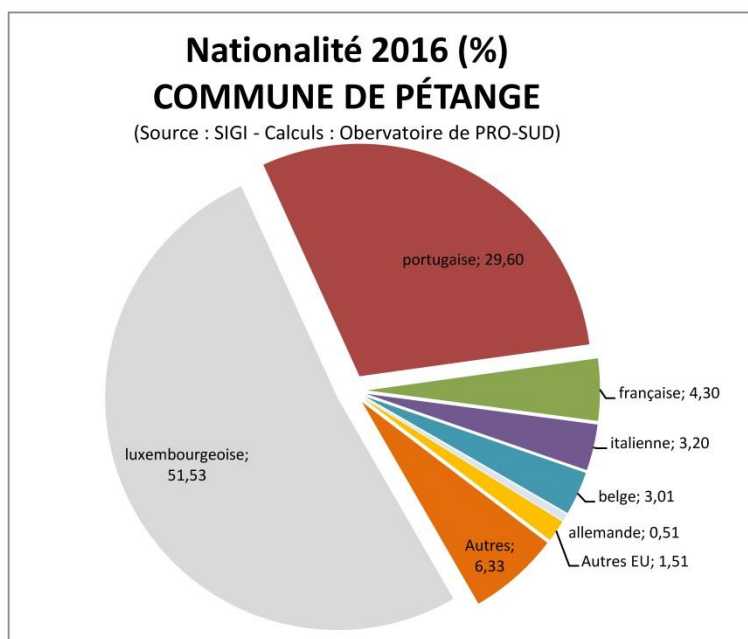


**Comparaison
sur 14 ans**

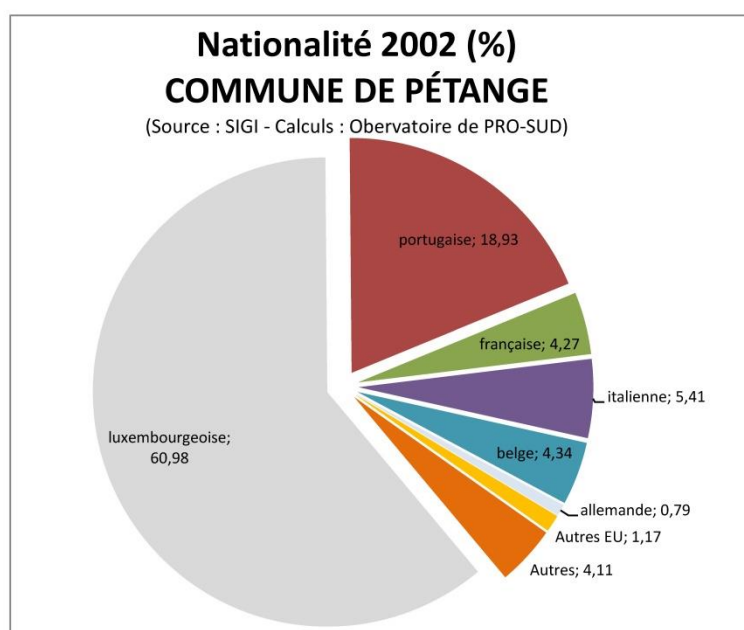
Commune : Nationalités 2016 et 2002



2016 - SIGI	PÉTANGE
luxembourgeoise	9209
portugaise	5290
française	768
italienne	572
belge	538
allemande	91
Autres EU	270
Autres	1132
Total	17870



2002 - SIGI	PÉTANGE
luxembourgeoise	8620
portugaise	2676
française	604
italienne	765
belge	614
allemande	111
Autres EU	165
Autres	581
Total	14136



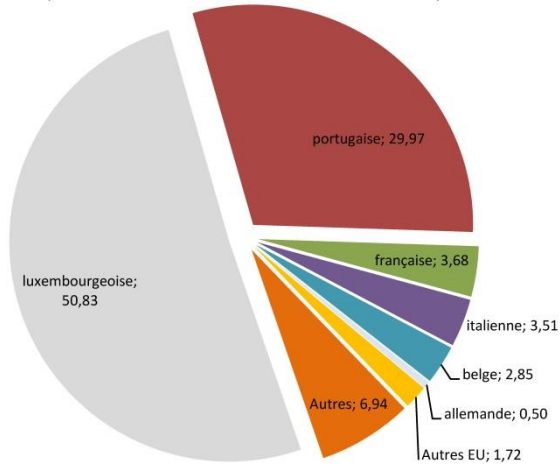
Localité : Nationalités 2016 et 2002



Nationalité 2016 (%)

Pétange

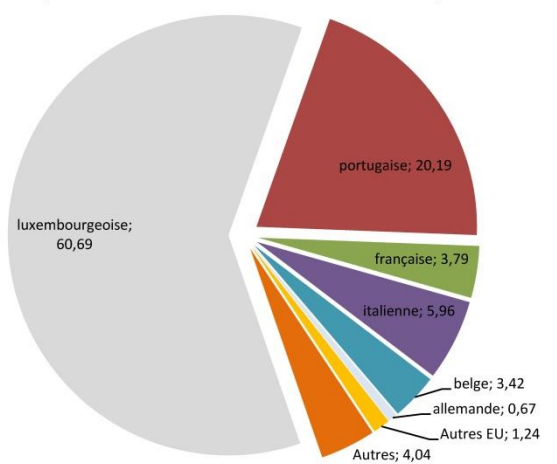
(Source : SIGI - Calculs : Observatoire de PRO-SUD)



Nationalité 2002 (%)

Pétange

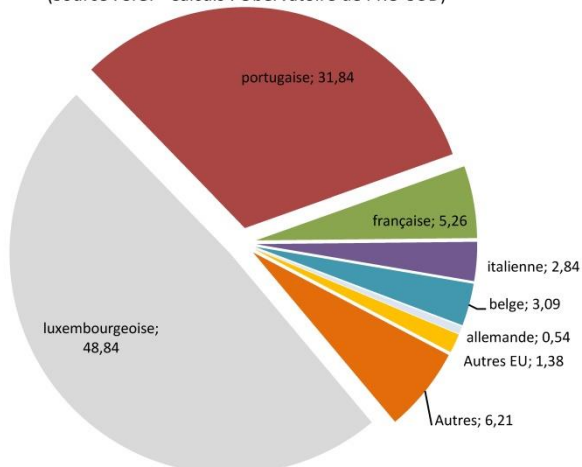
(Source : SIGI - Calculs : Observatoire de PRO-SUD)



Nationalité 2016 (%)

Rodange

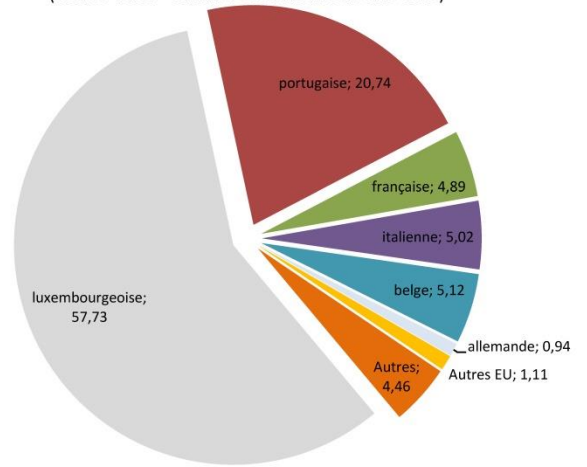
(Source : SIGI - Calculs : Observatoire de PRO-SUD)



Nationalité 2002 (%)

Rodange

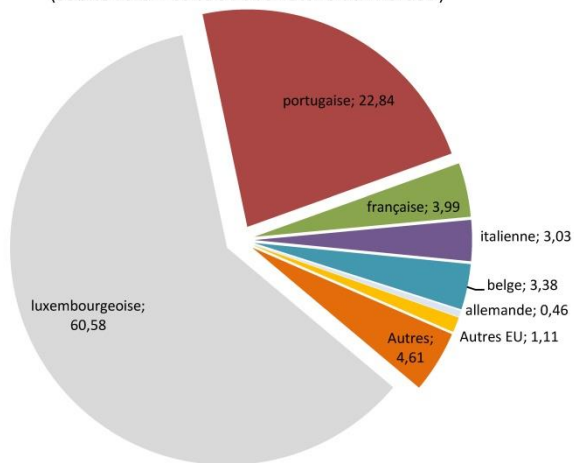
(Source : SIGI - Calculs : Observatoire de PRO-SUD)



Nationalité 2016 (%)

Lamadelaie

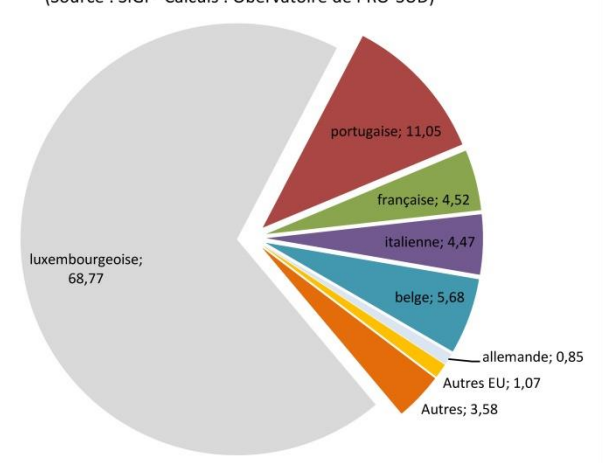
(Source : SIGI - Calculs : Observatoire de PRO-SUD)



Nationalité 2002 (%)

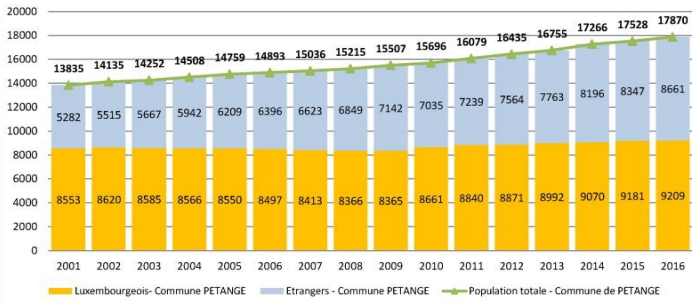
Lamadelaie

(Source : SIGI - Calculs : Observatoire de PRO-SUD)



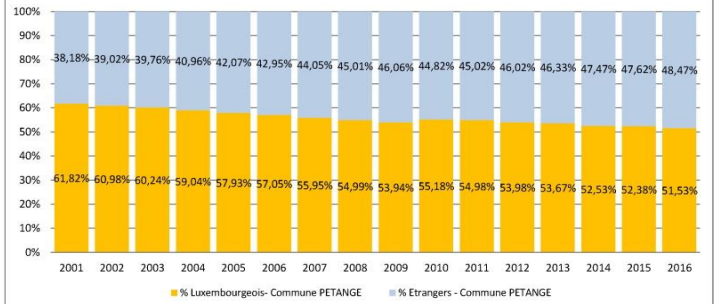
Evolution de la population communale par nationalité PÉTANGE

Source : SIGI - Claculs Observatoire de PRO-SUD



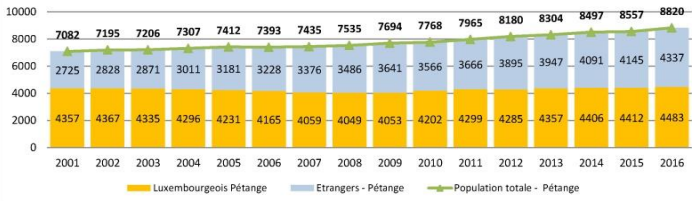
Evolution de la population communale par nationalité (%) PÉTANGE

Source : SIGI - Claculs Observatoire de PRO-SUD



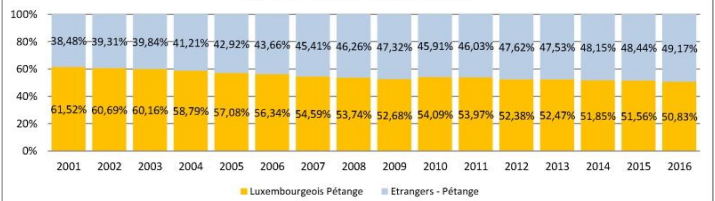
Evolution de la population de Pétange par nationalité

Source : SIGI - Claculs Observatoire de PRO-SUD



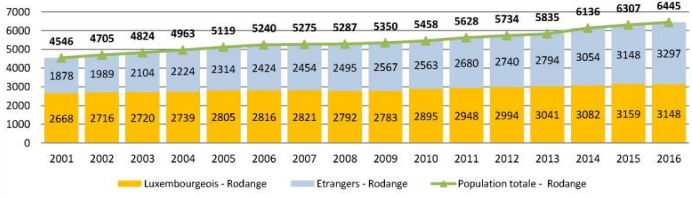
Evolution de la population de Pétange par nationalité (%)

Source : SIGI - Claculs Observatoire de PRO-SUD



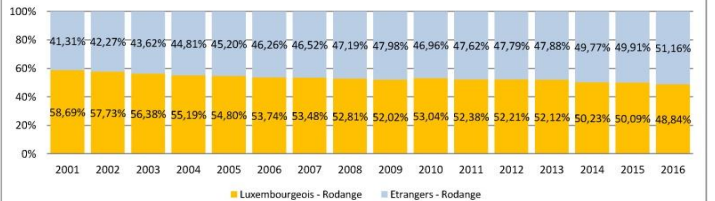
Evolution de la population de Rodange par nationalité

Source : SIGI - Claculs Observatoire de PRO-SUD



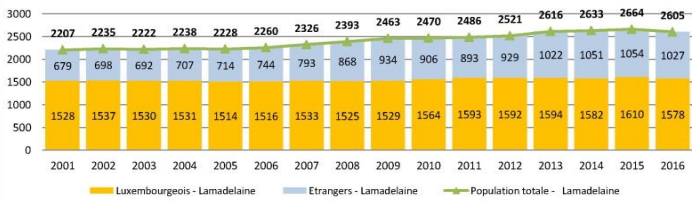
Evolution de la population de Rodange par nationalité (%)

Source : SIGI - Claculs Observatoire de PRO-SUD



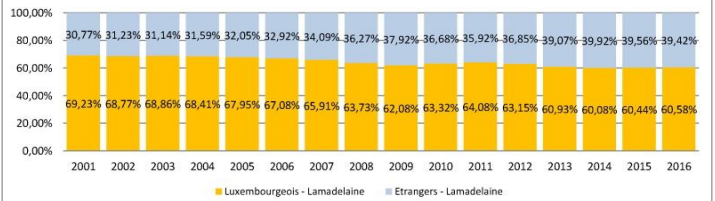
Evolution de la population de Lamadelaine par nationalité

Source : SIGI - Claculs Observatoire de PRO-SUD



Evolution de la population de Lamadelaine par nationalité (%)

Source : SIGI - Claculs Observatoire de PRO-SUD



Pyramides des âges & nationalité

