

PRO-SUD PRÉSENTE

**1 RÉGION &
11 COMMUNES
EN CHIFFRES**

Édition 2017



Indices Sud

POUR LES ÉTUDES PRÉPARATOIRES VOLET ANALYSE

Syndicat PRO-SUD 

12, avenue du Rock'n'Roll

L-4361 Esch-sur-Alzette

Tél. : 26 17 97 1 | Fax : 26 17 97 777

prosud@prosud.lu | www.prosud.lu



LA RÉGION SUD

SANEM



VOLET DÉMOGRAPHIE

- Population
- Évolution démographique
- Soldes naturel et migratoire
- Pyramides des âges
- Nationalité

Source : STATEC et SIGI





Population

SANEM

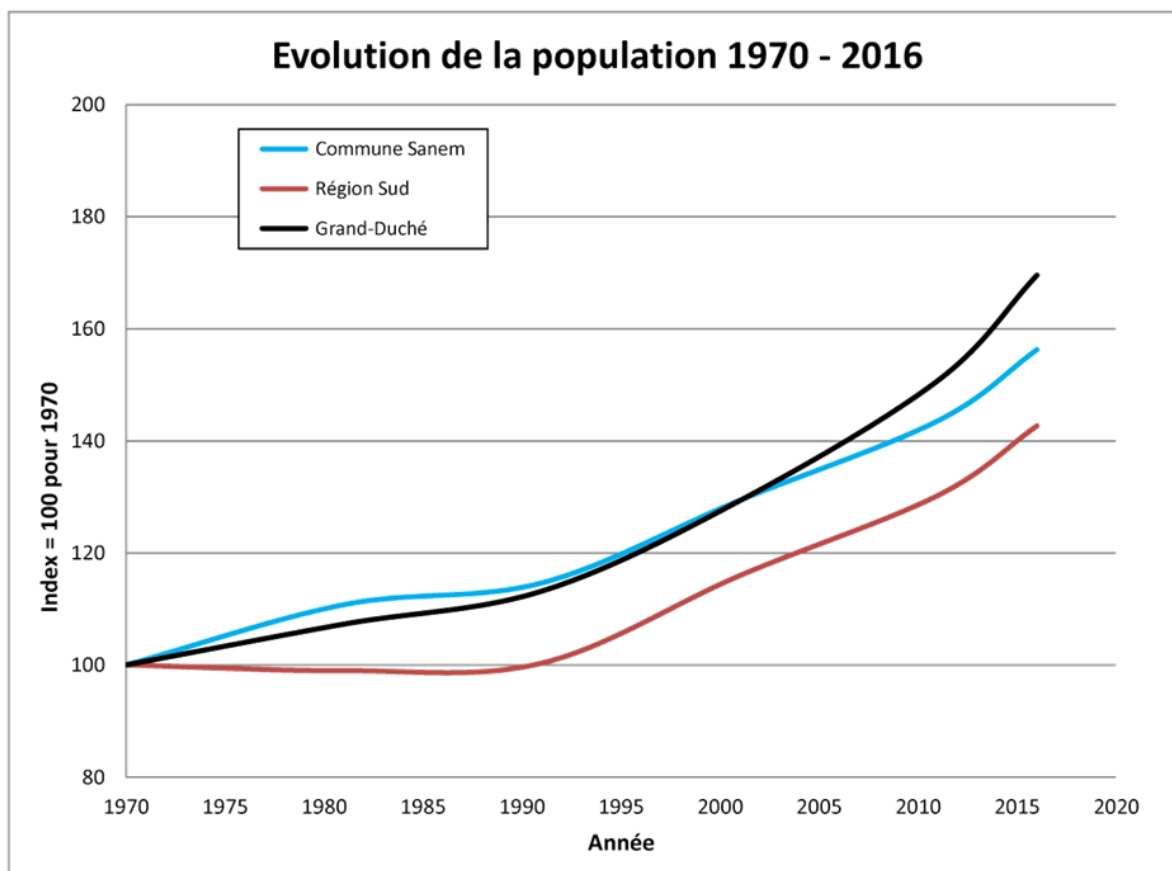
Evolution de la population 1970 - 2016 (Index = 100 pour 1970)

Chiffres absolus

	1970	1981	1991	2001	2011	2016
Commune Sanem	10.078	11162	11554	13041	14470	15.748
Région Sud	114.251	113.083	114.624	132.483	148.812	160.046
Grand-Duché	339.841	364.597	384.634	439.539	512.353	562.958

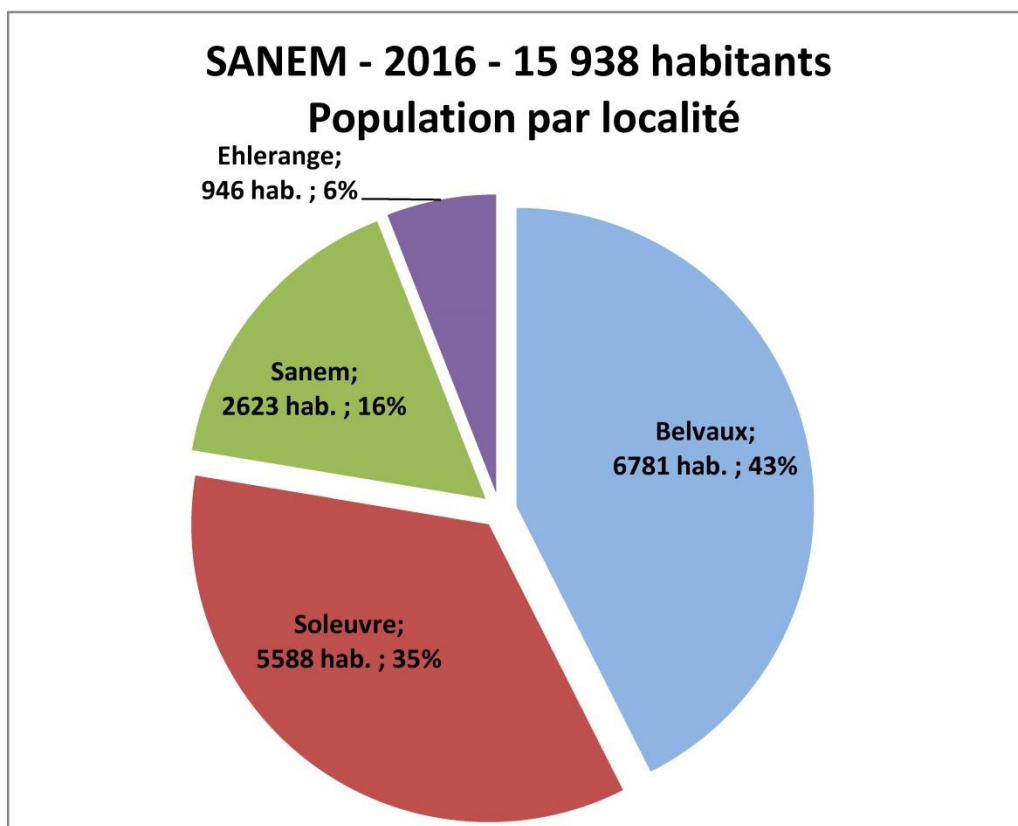
Index = 100 pour 1970

	1970	1981	1991	2001	2011	2016
Commune Sanem	100	110,76	114,65	129,40	143,58	156,26
Région Sud	100	98,98	100,33	115,96	130,25	142,67
Grand-Duché	100	107,28	113,18	129,34	150,76	169,56

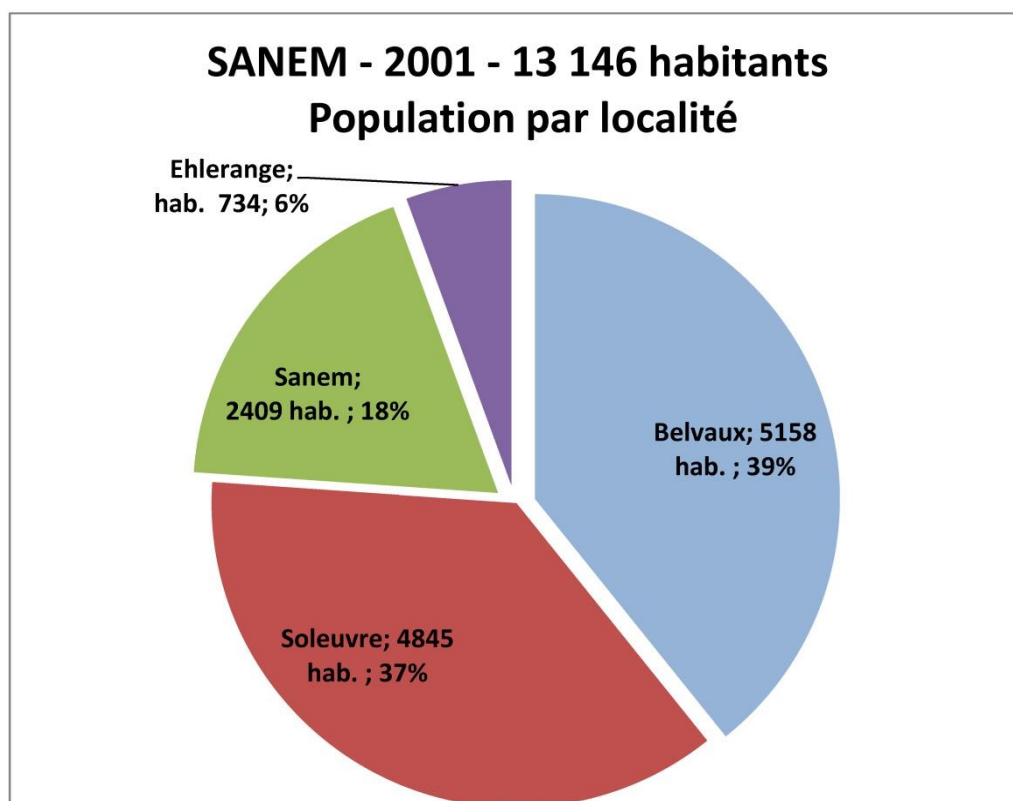




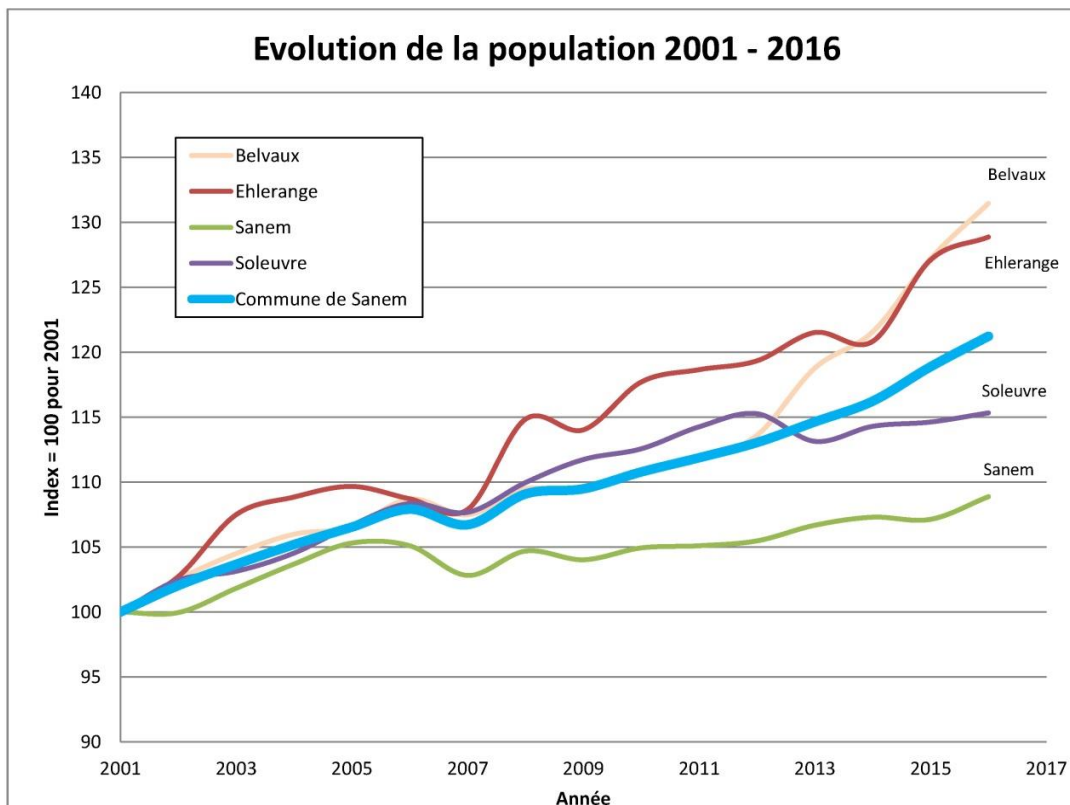
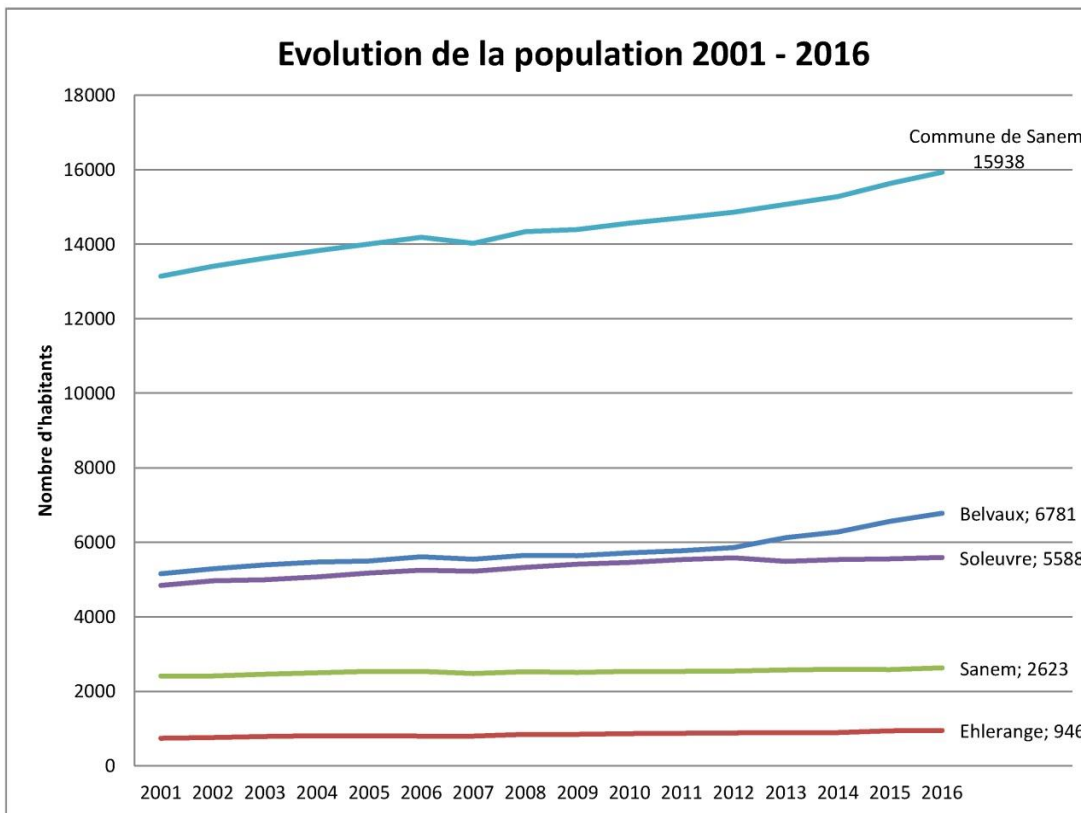
2016



2001



Évolution démographique par localité



SANEM

Evolution de la population 2001 - 2016 (Index = 100 pour 2001)

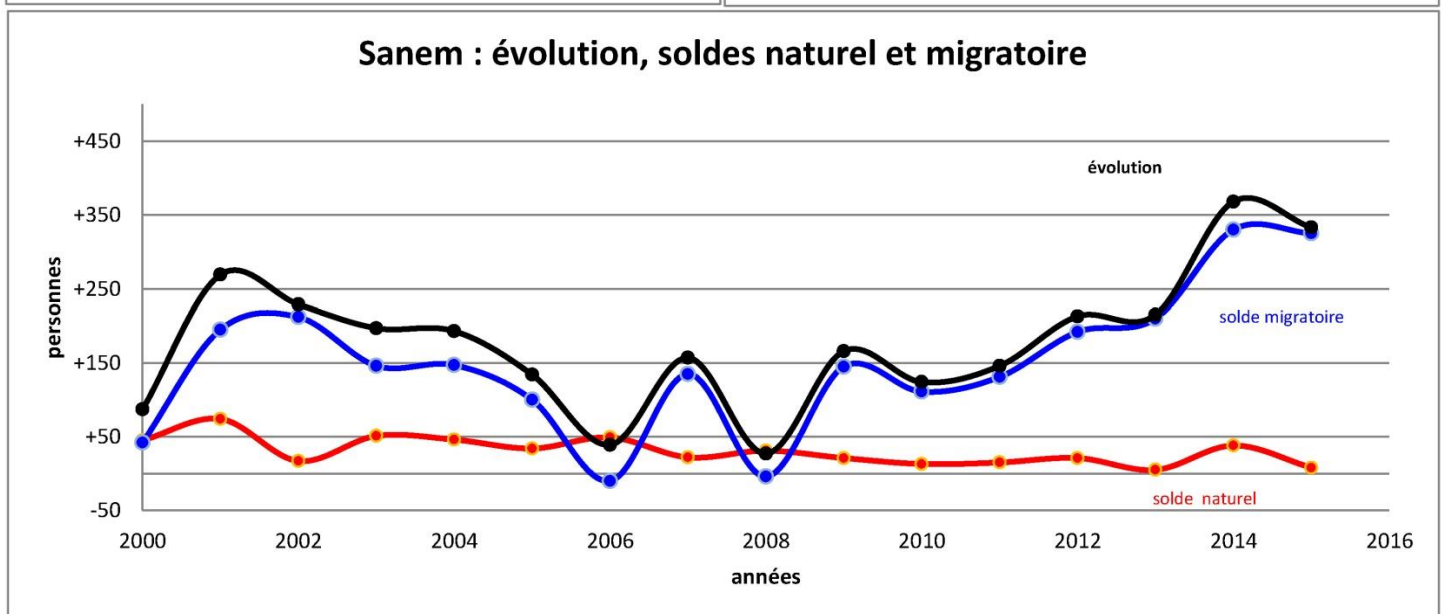
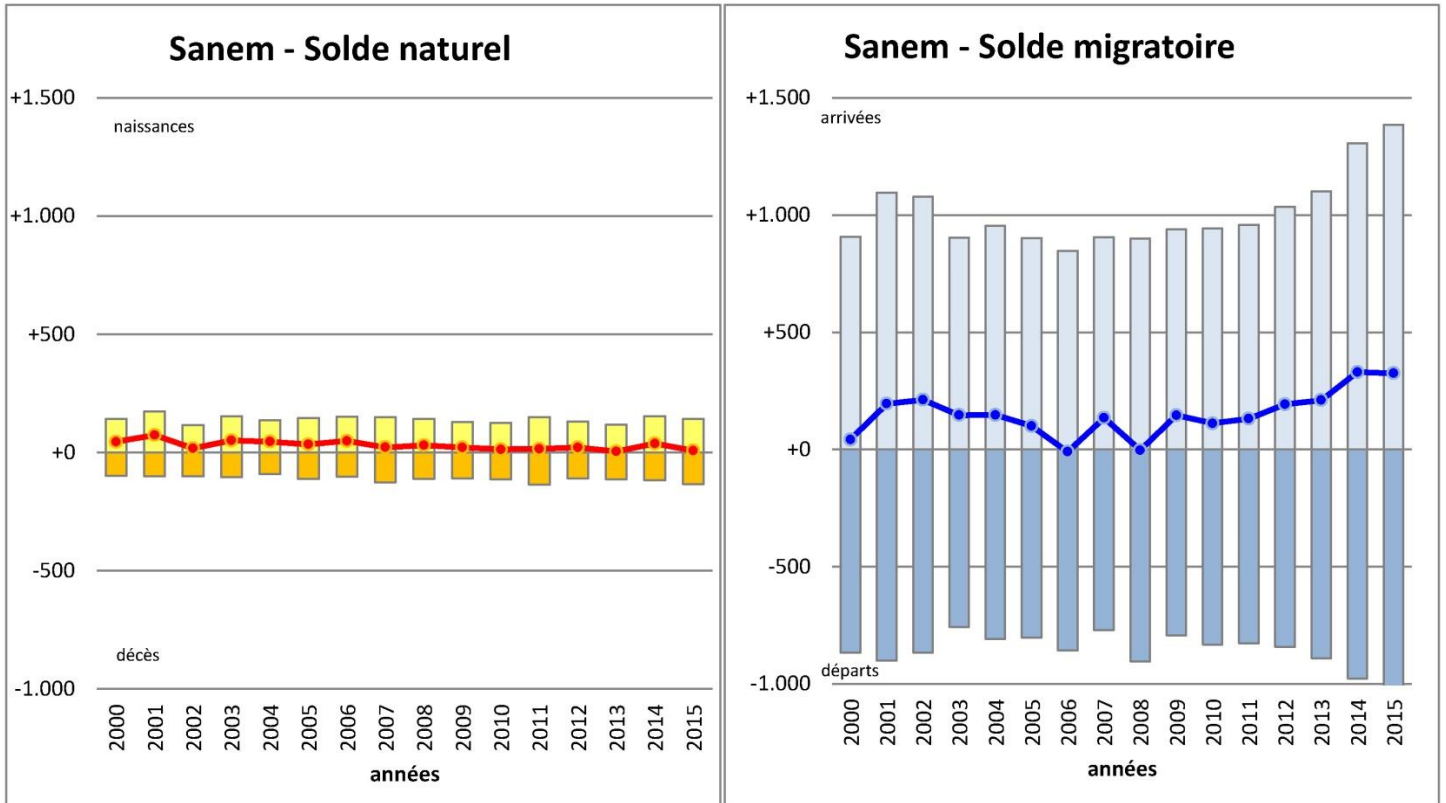
Chiffres absolus

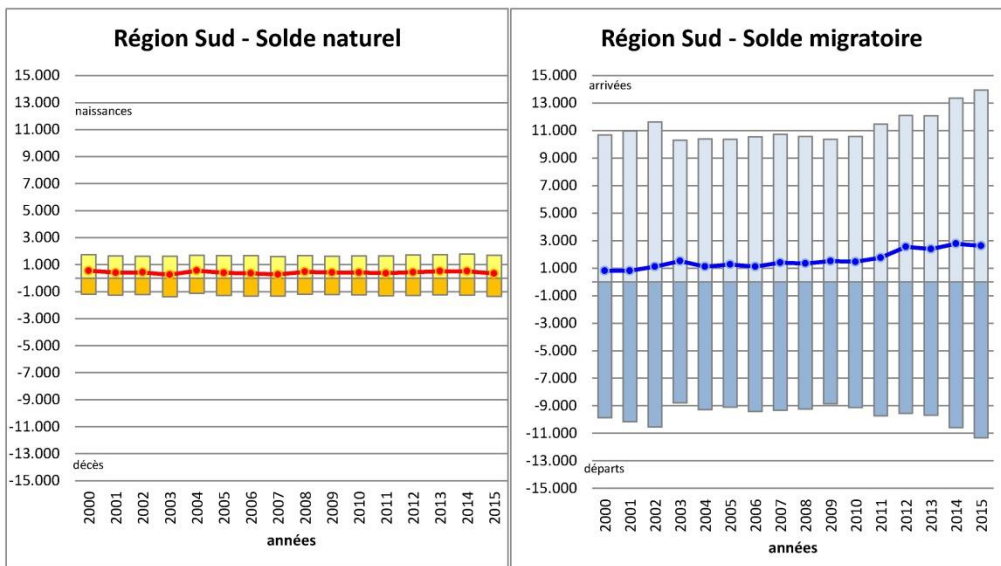
	2001	2002	2003	2004	2005	2006	2007	2008	2009	2010	2011	2012	2013	2014	2015	2016
Belvaux	5158	5288	5390	5467	5495	5607	5544	5648	5637	5718	5769	5860	6127	6271	6561	6781
Ehlerange	734	754	789	799	805	798	792	843	837	864	871	876	892	887	933	946
Sanem	2409	2408	2453	2498	2537	2532	2477	2522	2506	2528	2532	2541	2570	2585	2581	2623
Soleuvre	4845	4964	4997	5065	5169	5250	5217	5328	5414	5454	5536	5585	5482	5538	5554	5588
Commune de Sanem	13146	13414	13629	13829	14006	14187	14030	14341	14394	14564	14708	14862	15071	15281	15629	15938

Index = 100 pour 2001

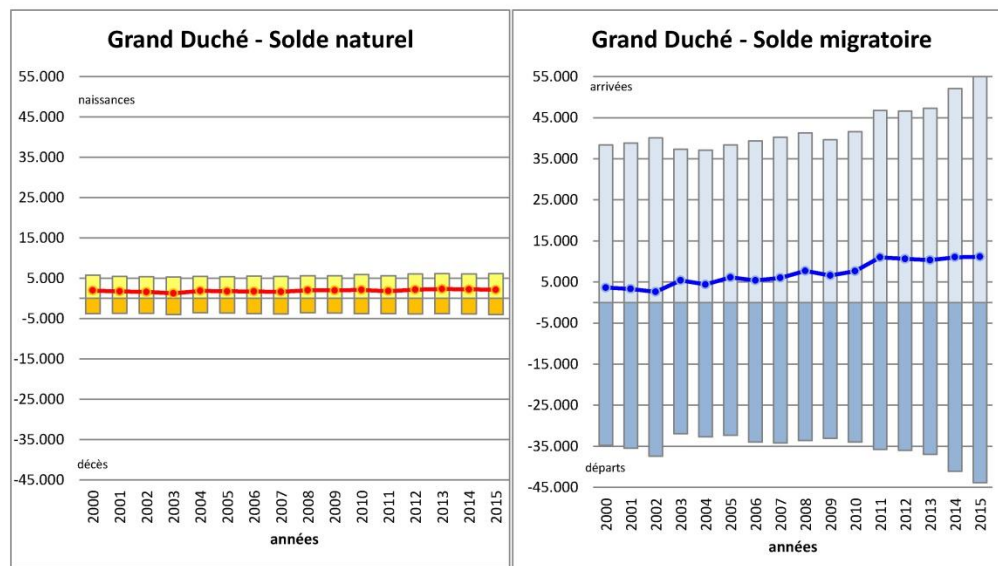
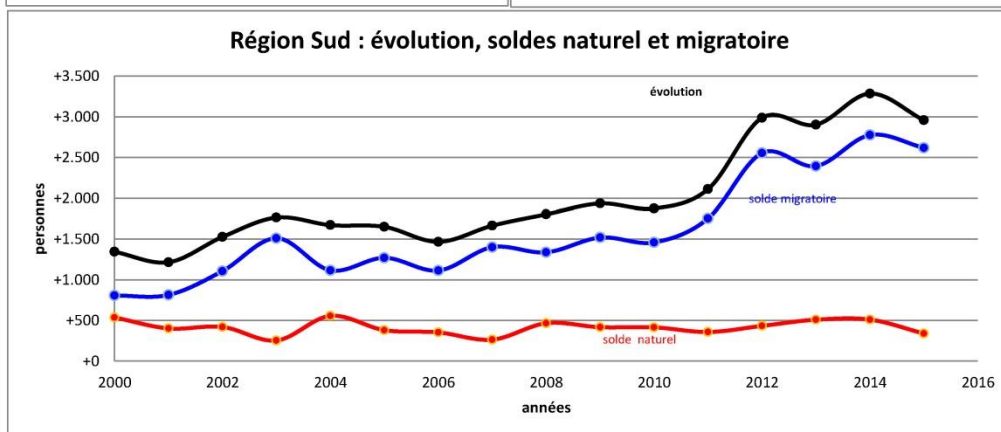
	2001	2002	2003	2004	2005	2006	2007	2008	2009	2010	2011	2012	2013	2014	2015	2016
Belvaux	100	102,52	104,50	105,99	106,53	108,70	107,48	109,50	109,29	110,86	111,85	113,61	118,79	121,58	127,20	131,47
Ehlerange	100	102,72	107,49	108,86	109,67	108,72	107,90	114,85	114,03	117,71	118,66	119,35	121,53	120,84	127,11	128,88
Sanem	100	99,96	101,83	103,69	105,31	105,11	102,82	104,69	104,03	104,94	105,11	105,48	106,68	107,31	107,14	108,88
Soleuvre	100	102,46	103,14	104,54	106,69	108,36	107,68	109,97	111,74	112,57	114,26	115,27	113,15	114,30	114,63	115,34
Commune de Sanem	100	102,04	103,67	105,20	106,54	107,92	106,72	109,09	109,49	110,79	111,88	113,05	114,64	116,24	118,89	121,24

Soldes naturel et migratoire

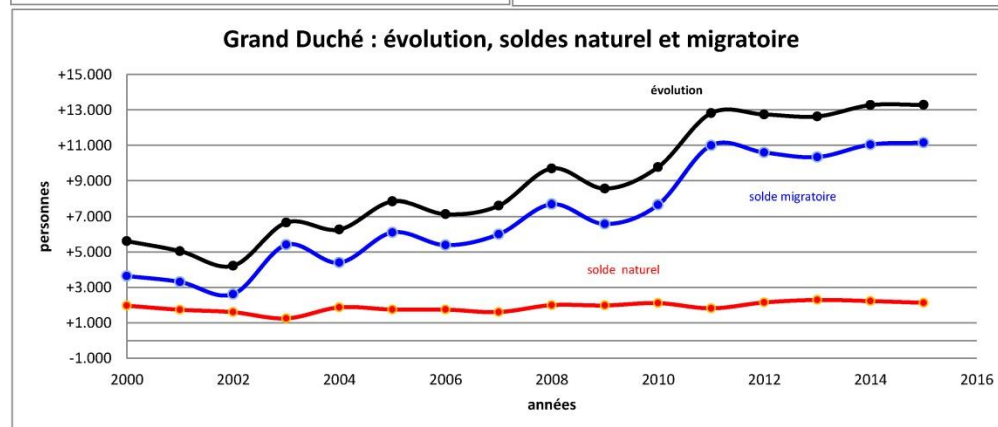




Région Sud



Grand-Duché de Luxembourg



Solde naturel

	Commune Sanem			Région Sud			Grand-Duché		
	naissances	décès	solde naturel	naissances	décès	solde naturel	naissances	décès	solde naturel
2000	+143	-98	+45	1.737	-1200	+537	5.723	-3.754	+1.969
2001	+174	-100	+74	1.655	-1.253	+402	5.459	-3.719	+1.740
2002	+117	-100	+17	1.634	-1.214	+420	5.345	-3.744	+1.601
2003	+154	-103	+51	1.636	-1.382	+254	5.303	-4.053	+1.250
2004	+136	-90	+46	1.685	-1.129	+556	5.452	-3.578	+1.874
2005	+146	-112	+34	1.660	-1.279	+381	5.371	-3.621	+1.750
2006	+151	-102	+49	1.679	-1.326	+353	5.514	-3.766	+1.748
2007	+149	-127	+22	1.599	-1.335	+264	5.477	-3.866	+1.611
2008	+142	-111	+31	1.664	-1.198	+466	5.596	-3.595	+2.001
2009	+130	-109	+21	1.625	-1.208	+417	5.638	-3.655	+1.983
2010	+126	-113	+13	1.654	-1.239	+415	5.874	-3.760	+2.114
2011	+150	-135	+15	1.656	-1.298	+358	5.639	-3.819	+1.820
2012	+131	-110	+21	1.709	-1.276	+433	6.026	-3.876	+2.150
2013	+119	-114	+5	1.751	-1.242	+509	6.115	-3.822	+2.293
2014	+154	-116	+38	1.781	-1.271	+510	6.070	-3.841	+2.229
2015	+142	-134	+8	1.685	-1.346	+339	6.115	-3.983	+2.132

Solde migratoire

	arrivés	départs	solde migratoire	arrivés	départs	solde migratoire	arrivés	départs	solde migratoire
	2000	+908	-866	+42	10.679	-9.872	+807	38.404	-34.760
2001	+1.096	-901	+195	10.973	-10.159	+814	38.789	-35.478	+3.311
2002	+1.078	-866	+212	11.641	-10.534	+1.107	40.074	-37.452	+2.622
2003	+903	-757	+146	10.309	-8.798	+1.511	37.354	-31.945	+5.409
2004	+955	-808	+147	10.394	-9.278	+1.116	37.116	-32.720	+4.396
2005	+902	-802	+100	10.367	-9.097	+1.270	38.392	-32.286	+6.106
2006	+847	-857	-10	10.541	-9.427	+1.114	39.357	-33.968	+5.389
2007	+905	-770	+135	10.736	-9.335	+1.401	40.226	-34.225	+6.001
2008	+900	-904	-4	10.582	-9.244	+1.338	41.326	-33.626	+7.700
2009	+939	-794	+145	10.371	-8.852	+1.519	39.660	-33.077	+6.583
2010	+944	-833	+111	10.584	-9.124	+1.460	41.629	-33.969	+7.660
2011	+959	-828	+131	11.479	-9.725	+1.754	46.792	-35.787	+11.005
2012	+1.035	-843	+192	12.106	-9.551	+2.555	46.599	-35.997	+10.602
2013	+1.101	-891	+210	12.080	-9.686	+2.394	47.321	-36.973	+10.348
2014	+1.307	-977	+330	13.365	-10.589	+2.776	52.112	-41.063	+11.049
2015	+1.385	-1.060	+325	13.952	-11.333	+2.619	54.997	-43.838	+11.159

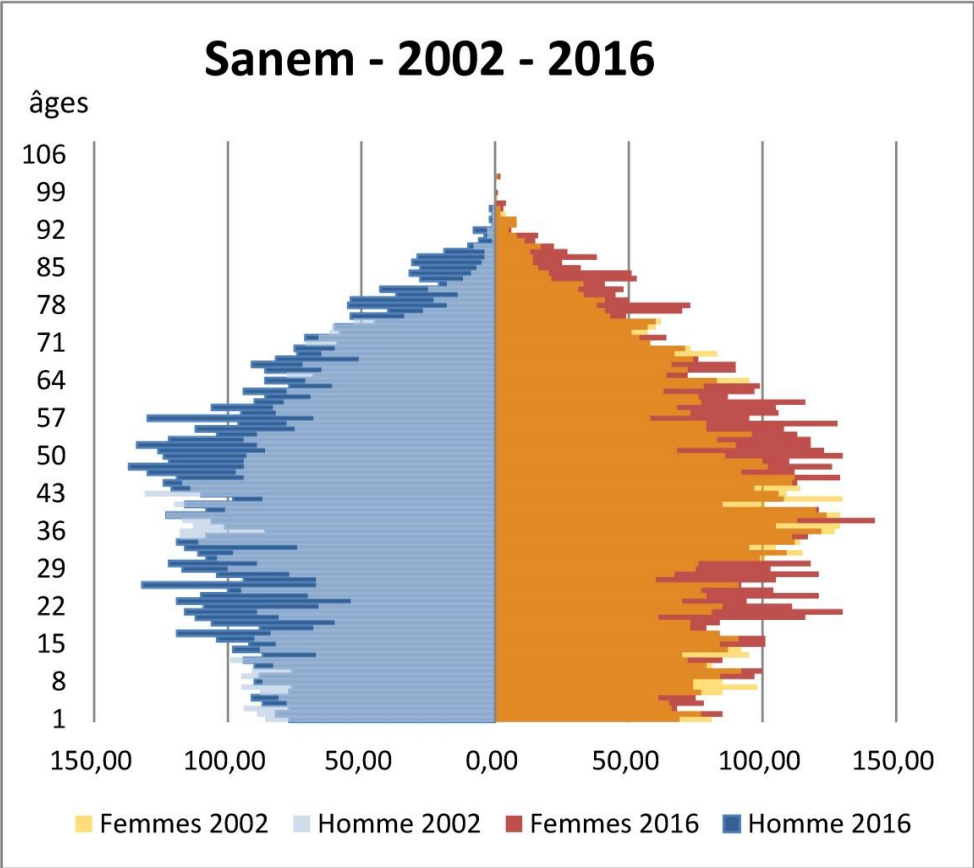
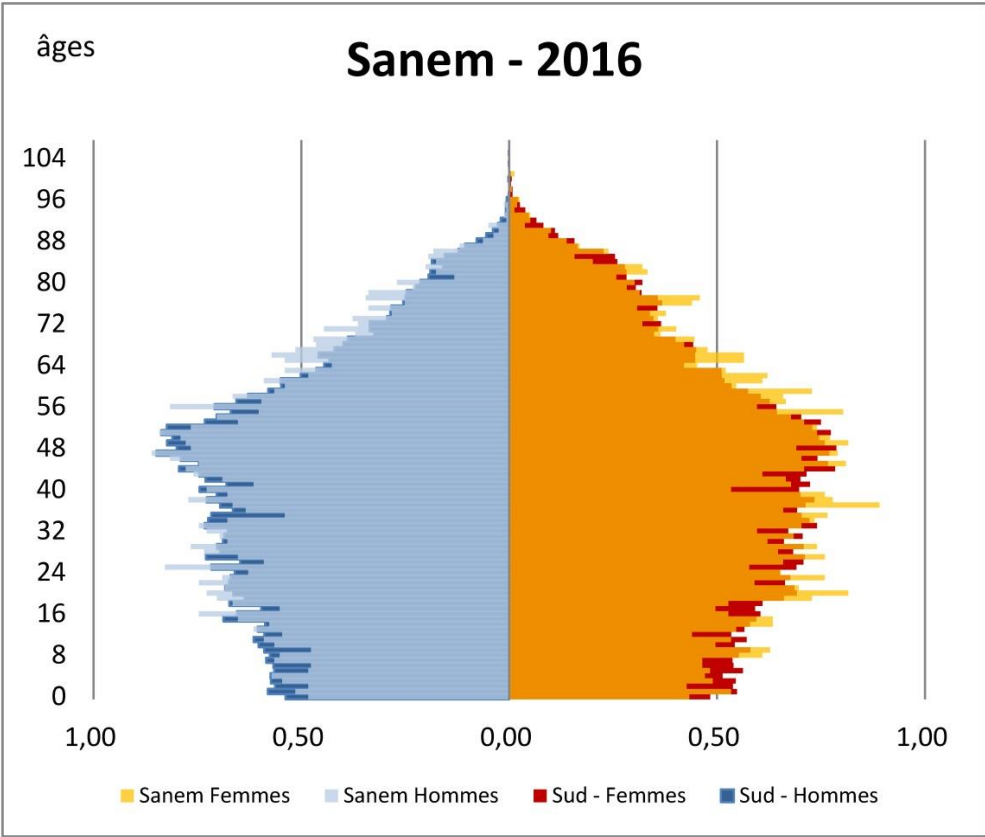
Evolution

	solde naturel	solde migratoire	évolution	solde naturel	solde migratoire	évolution	solde naturel	solde migratoire	évolution
	2000	+45	+42	+87	+537	+807	+1.344	+1.969	+3.644
2001	+74	+195	+269	+402	+814	+1.216	+1.740	+3.311	+5.051
2002	+17	+212	+229	+420	+1.107	+1.527	+1.601	+2.622	+4.223
2003	+51	+146	+197	+254	+1.511	+1.765	+1.250	+5.409	+6.659
2004	+46	+147	+193	+556	+1.116	+1.672	+1.874	+4.396	+6.270
2005	+34	+100	+134	+381	+1.270	+1.651	+1.750	+6.106	+7.856
2006	+49	-10	+39	+353	+1.114	+1.467	+1.748	+5.389	+7.137
2007	+22	+135	+157	+264	+1.401	+1.665	+1.611	+6.001	+7.612
2008	+31	-4	+27	+466	+1.338	+1.804	+2.001	+7.700	+9.701
2009	+21	+145	+166	+417	+1.519	+1.936	+1.983	+6.583	+8.566
2010	+13	+111	+124	+415	+1.460	+1.875	+2.114	+7.660	+9.774
2011	+15	+131	+146	+358	+1.754	+2.112	+1.820	+11.005	+12.825
2012	+21	+192	+213	+433	+2.555	+2.988	+2.150	+10.602	+12.752
2013	+5	+210	+215	+509	+2.394	+2.903	+2.293	+10.348	+12.641
2014	+38	+330	+368	+510	+2.776	+3.286	+2.229	+11.049	+13.278
2015	+8	+325	+333	+339	+2.619	+2.958	+2.132	+11.159	+13.291

Pyramides des âges



**Superposition
avec la région**

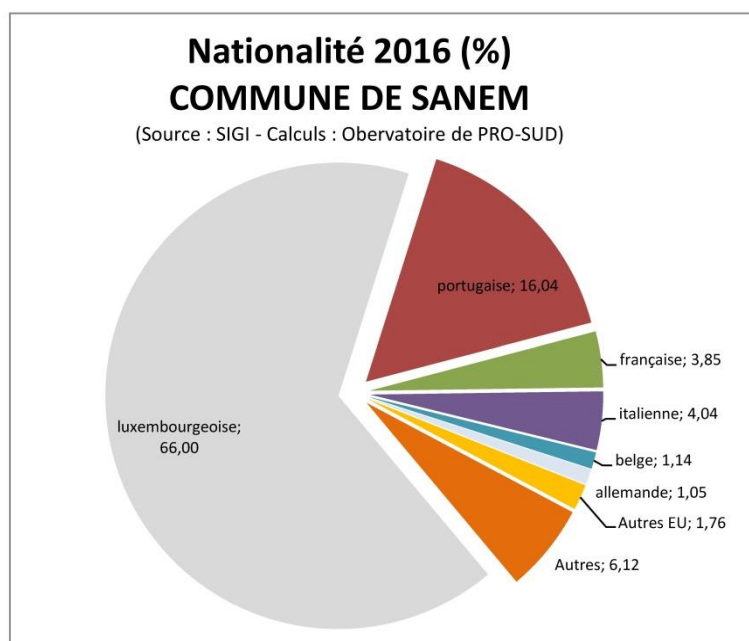


**Comparaison
sur 14 ans**

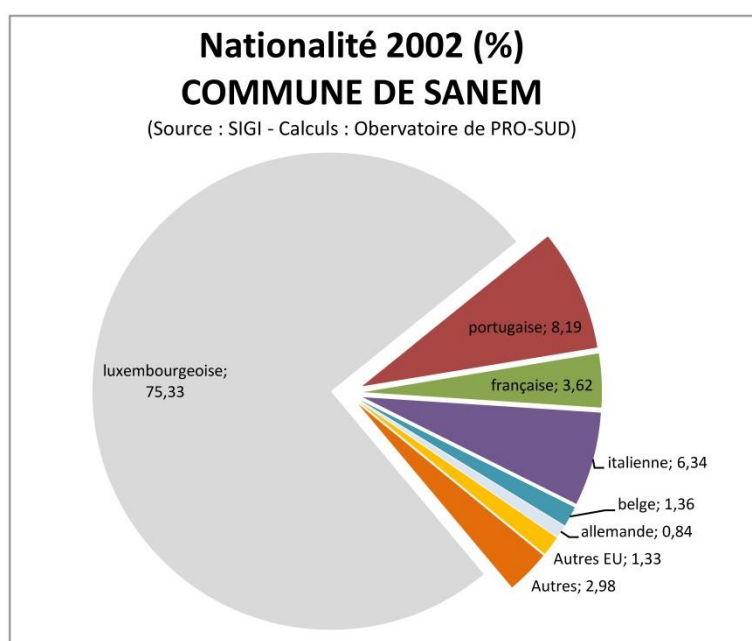
Commune : Nationalités 2016 et 2002



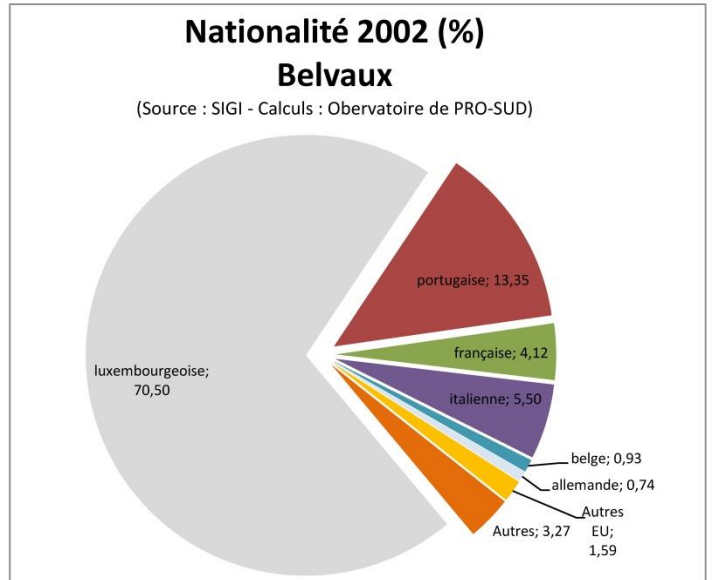
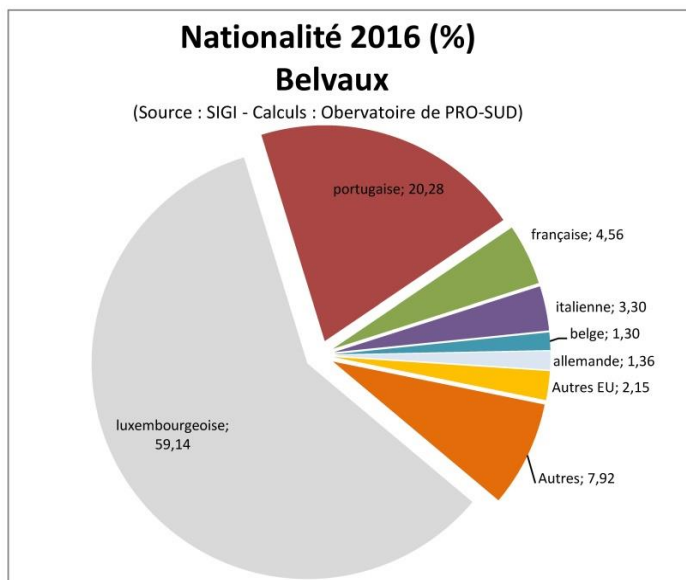
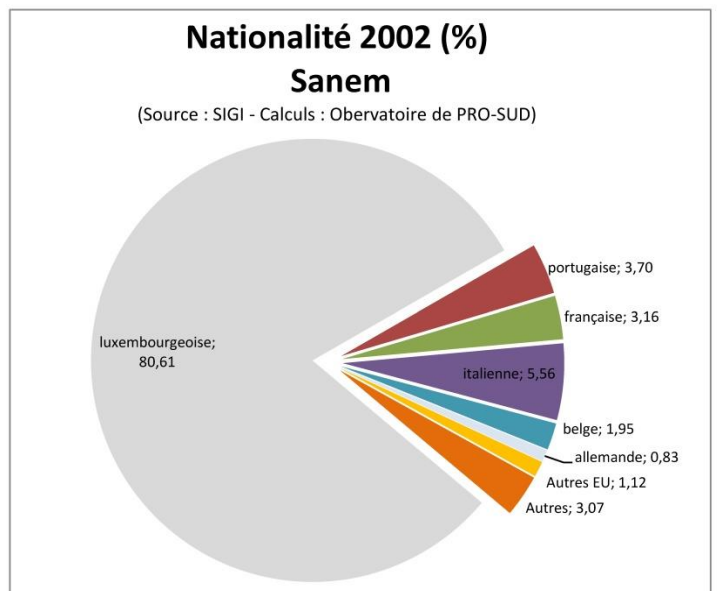
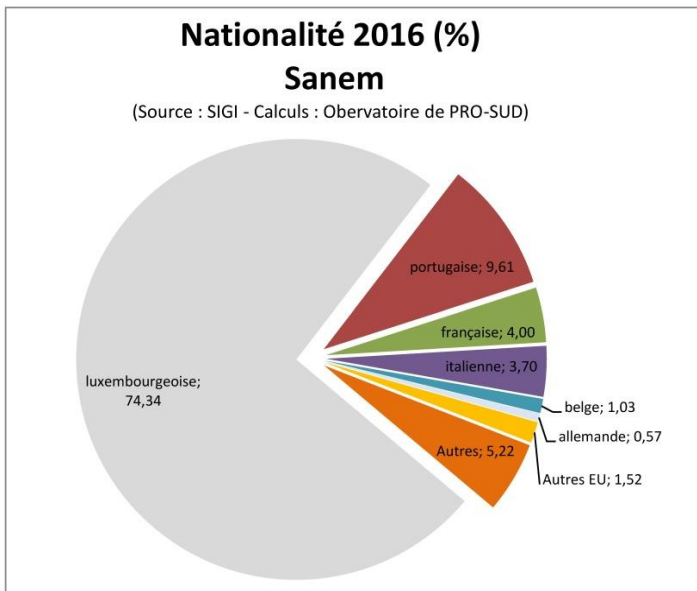
2016 - SIGI	SANEM
luxembourgeoise	10519
portugaise	2556
française	614
italienne	644
belge	181
allemande	167
Autres EU	281
Autres	976
Total	15938



2002 - SIGI	SANEM
luxembourgeoise	10105
portugaise	1098
française	486
italienne	850
belge	183
allemande	113
Autres EU	179
Autres	400
Total	13414



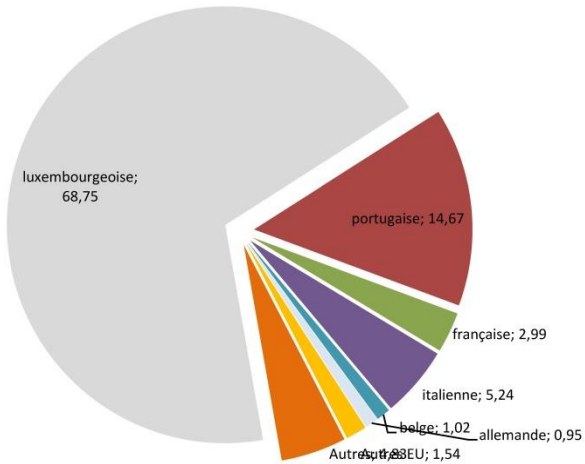
Localité : Nationalités 2016 et 2002



Nationalité 2016 (%)

Soleuvre

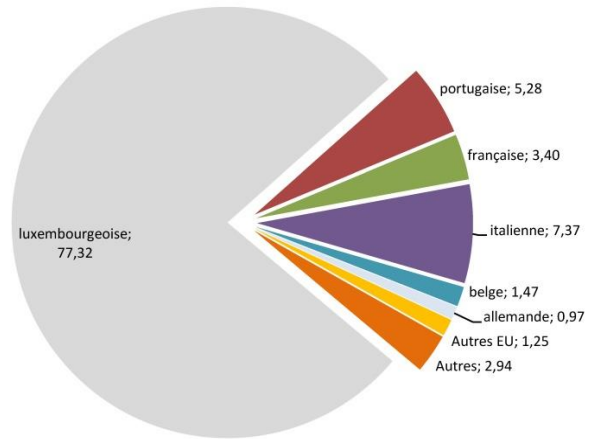
(Source : SIGI - Calculs : Observatoire de PRO-SUD)



Nationalité 2002 (%)

Soleuvre

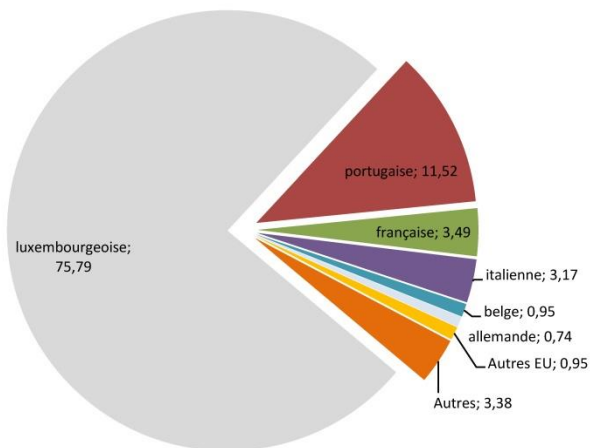
(Source : SIGI - Calculs : Observatoire de PRO-SUD)



Nationalité 2016 (%)

Ehlerange

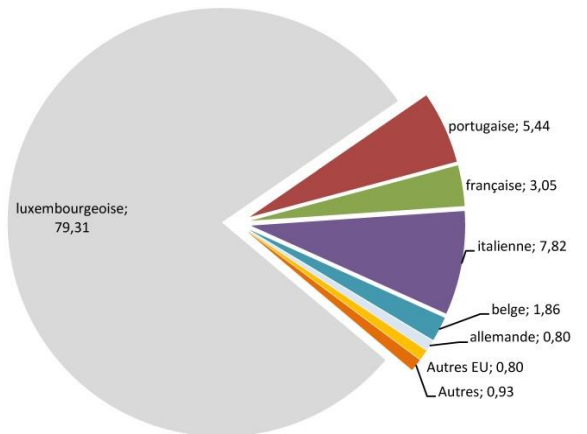
(Source : SIGI - Calculs : Observatoire de PRO-SUD)

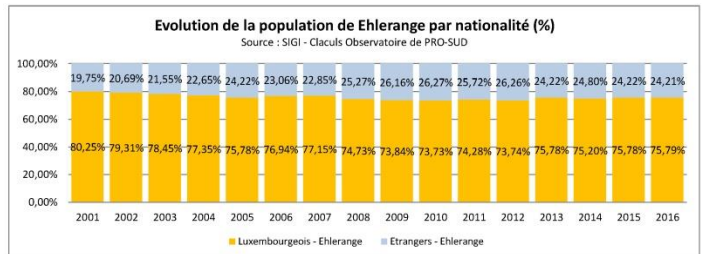
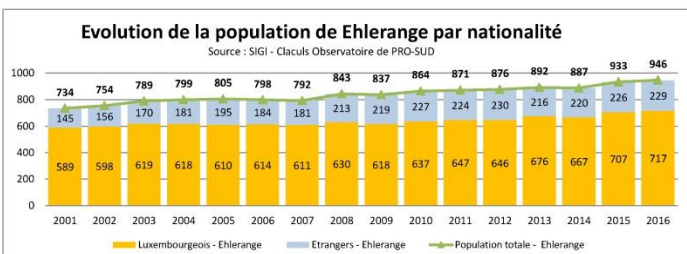
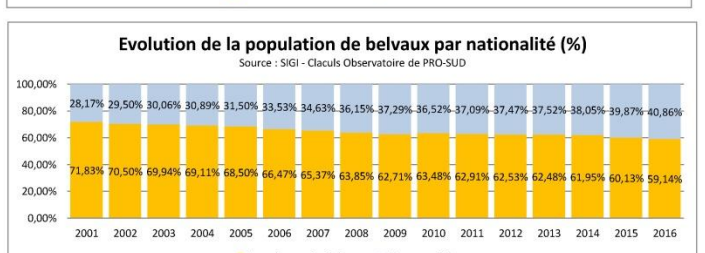
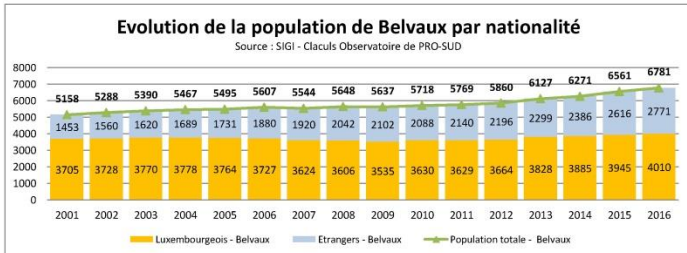
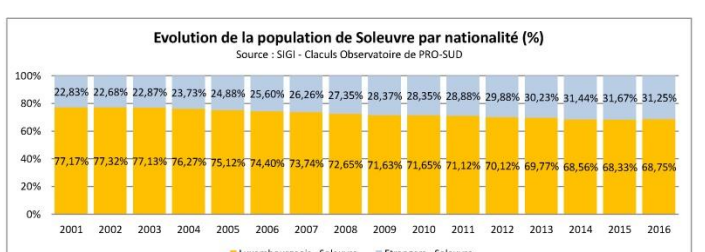
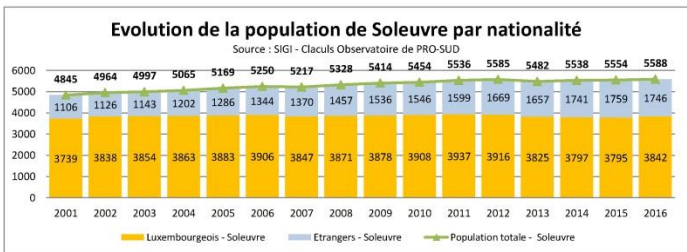
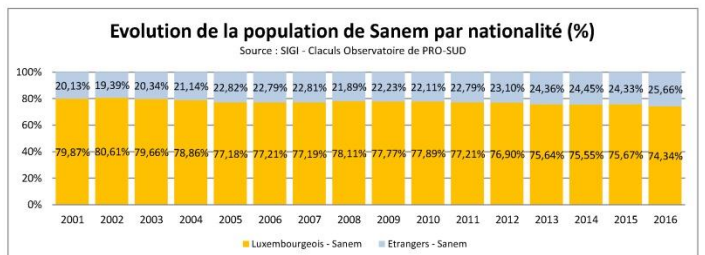
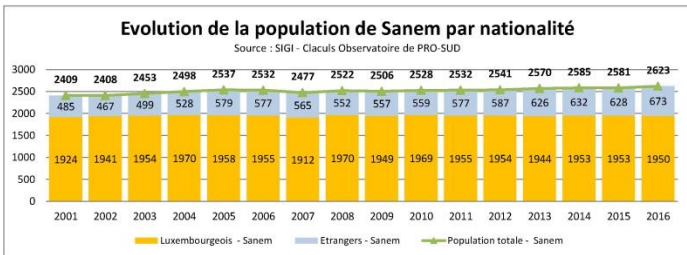
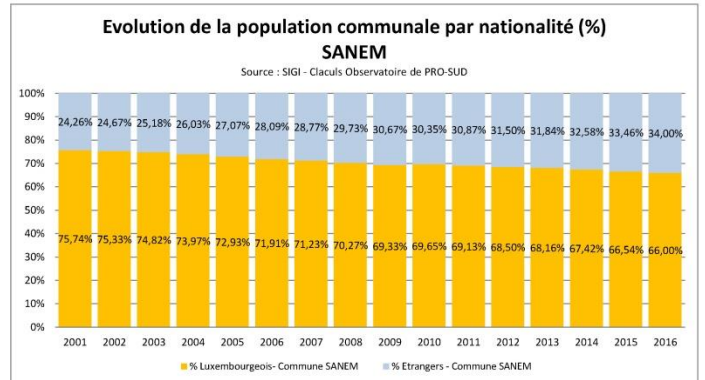
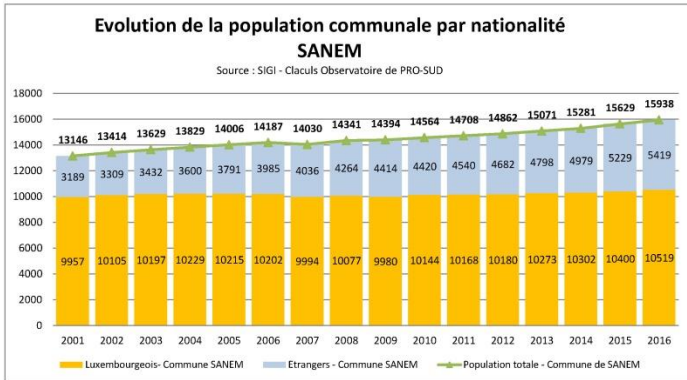


Nationalité 2002 (%)

Ehlerange

(Source : SIGI - Calculs : Observatoire de PRO-SUD)





Pyramides des âges & nationalité

